



# Cotton Comments

OSU Southwest Oklahoma Research and Extension Center  
Altus, OK



April 8, 2021

Volume 11 No. 1

## 2021 Cotton Season

Every year we are faced with what seems to be bigger and bigger challenges. This year is no different. This year so far and has been dominated with new label requirements, more required training and lack of CEU opportunities. The world has changed so much, when this newsletter was first started the discussion was moisture conditions and how bad insects will be. All I can say is we are one day closer to a rain and insects are always here.

## Required Training for Dicamba Applicators

If you still not have received your mandatory training for Dicamba use, contact your local county extension office.

## Required Training for Paraquat Applicators

Todd Baughman  
Weed Science Professor

Misha Manuchehri  
Weed Science Extension Specialist

Kevin Shelton  
Pesticide Coordinator

“In accordance with EPA’s 2016 Paraquat Dichloride Human Health Mitigation Decision, applicators are required to take an EPA-approved paraquat training program every 3 years in order to mix, load, apply, or handle paraquat.”

## What Does this Mean?

All certified applicators who intend to apply paraquat (as mandated by the U.S. Environmental Protection Agency – EPA) must complete the paraquat training requirement.

## **Where and How Do I Take the Training?**

Every certified applicator needs to go the eXtension link:  
How To Safely Use and Handle Paraquat-Containing Products  
<https://campus.extension.org/enrol/index.php?id=1660>

You will need to log in by clicking on the 'Log in' button  
<https://campus.extension.org/login/index.php> at the top, right side of the page. An email will then be sent to your Google or Microsoft account. Confirm the account by clicking on the link in the email.

You can log in under your Google or Microsoft account.

## **What if I do not have a Google or Microsoft account?**

You will need to create an account by clicking on the 'Create New Account' button at the bottom of the page <https://campus.extension.org/login/signup.php>  
You will then need to create a self-selected username and password and fill out the other required information.

After your registration has been confirmed, click on the 'My Courses' button and select 'Paraquat'.

You will then be able to participate in the 'How To Safely Use and Handle Paraquat-Containing Products' course <https://campus.extension.org/enrol/index.php?id=1660>.

## **What's Next?**

You can complete the online course by clicking on the 'Click to Take the Online Course'. This will then take you to the online course where you will click the 'Enter' button. Finally, this will open a new window with the actual course. After watching each of the modules of the training course, you will click on the 'Course Homepage' button. This will return you to the 'How To Safely Use and Handle Paraquat-Containing Products' page. At the bottom, left side of the page, you will see 'Take The Final Assessment'. Click on the 'Final Assessment' link. The link will take you to the final quiz page. You must complete the 15-question quiz and make a 100% on the quiz before you will receive your Certificate of Completion. Click on the 'Certificate of Completion' link at the bottom of the page and then select 'Get Certificate'. You now can print a copy of your certificate for your records.

## **How Long is the Certificate/Training Good For?**

The certificate expires 3 years from the date of completion.

## **Can Anyone Purchase Paraquat?**

No, paraquat is a restricted use pesticide (RUP) and can only be purchased by certified or private applicators.

## Private Applicators



### Private Applicators License Updates

A private pesticide applicator is someone who uses or supervises the use of restricted-use pesticide to produce an agricultural commodity on: personally owned property; rented property; property owned by his or her employer; property under his or her general control; or the property of another person if applied without compensation, other than the trading of personal services between producers of agricultural commodities.

An ag commodity is a plant or animal grown for sale, lease, barter, feed or human consumption and animals raised for farm or ranch work. No license is required to apply general-use pesticides to produce ag commodities.

#### Open-Book Exam Changes

- EPA's 2017 revision to CFR part 171 requires all testing to be closed-book and proctored
- Deadline to submit paper exams: **June 1, 2021**
- Study packets will continue to be available at county extension offices (no exam included) for proctored exams

#### NEW Testing Procedure

- Exam must be taken at a PSI Services testing location
  - 7 locations in Oklahoma
  - Exam is administered on a computer
- Register & Schedule exam online or by phone:
  - [www.psiexams.com](http://www.psiexams.com)
    - Create an account (email address required)
  - Phone: (855) 579-4643

#### Continuing Education Units (CEUs) for Private Applicators

- **Certification Cycle: 2019-2023**
  - Private Applicators can get credit for courses approved for Ag Plant (1A)
  - ODAFF tracks CEUs that are provided to the Agency
  - CEUs prorated depending on date certified
- Deadline for recertification with CEUs: **December 31, 2023**
- May not receive CEUs in the year first certified
- May receive no more than 10 CEUs in one year

What year did you get certified?	What year can you start earning CEUs?	How many CEUs do you need to recertify?
2019	2020	16
2020	2021	12
2021	2022	8
2022	2023	4
2023*	Expiration date moves to the next cycle (2024-2028)*	20*

\*Private applicators certifying in 2023 must receive 1-10 CEUs in at least 3 out of 5 years (years do not have to be sequential).

For additional questions, contact Megan Parker at 405.522.5972.

## Insecticide Seed Treatments for Thrips Control

Now is the time to decide on whether to use a seed treatment or wait to control thrips by foliar spray application if damaging populations develop. There are pros and cons to both options. Seed treatments are easy to use and relatively safe to handle. In-season chemical control application timing is critical and weather plays a part. One of the “pros” of waiting is that added expense only occurs if a damaging population occurs and a decision is made to treat. Also cotton has a great ability to compensate for early damage in Oklahoma growing conditions. If you decide to wait for foliar application, this will be discussed in later newsletters.

There are a number of seed treatments on the market which include Gaucho Grande, Cruiser, Avicta Complete Cotton, and Aeris. The length of control is dependent upon growing conditions and thrips pressure. Additional follow-up thrips control can sometimes be warranted after using any of the below listed seed treatments.

- **Gaucho Grande, Acceleron I, and generics** (imidacloprid, a systemic neonicotinoid insecticide) are weak against western flower thrips, our primary species in Oklahoma. If onion thrips are the only species they provide acceptable control. The length of control for western flower thrips lasts about **7 days**<sup>1</sup>.
- **Aeris** (imidacloprid and thiodicarb). The added thiodicarb increases western flower thrips control and provides some nematode control. Thrips control generally lasts **14-18 days**<sup>1</sup>.
- **Cruiser** (thiamethoxam) is another systemic neonicotinoid but extends control of western flower thrips. The length of thrips control is generally about **14-18 days**<sup>1</sup>.
- **Avicta Complete Cotton and Acceleron N** both contain multiple products including upgraded fungicides. Length of western flower thrips control is about **18-21 days**<sup>1</sup>.

<sup>1</sup> Dr. David Kerns Professor, IPM Coordinator, and Extension Specialist Department of Entomology Texas A&M University, College Station, TX provided the length of control for each treatment.

For all of the above treatments 21 days is the maximum length of control. A cotton plant may still sustain thrips damage until up to the fourth true leaf stage. In some years, because of varying growing conditions, this is adequate. In other years the crop may not reach this stage after 21 days, and thus may not be adequate. Therefore, it may be important to keep cotton growth and development rate and foliar thrips control products in mind.

## Successful Planting Strategy

The following was provided by Dr. Randy Boman. Next to variety selection, most likely the next very important decision a producer makes is when to plant. The single most important issue to recognize is that cotton seedlings can be damaged by cool, wet soils. Depending upon the region of the U.S., many producers typically begin planting based on the calendar date. However, the long-term optimum planting window for most states is determined based on field trials and average soil temperatures. Although soil temperatures can sometimes be high outside of this window, many times they can drop, especially if precipitation is obtained and a cold front pushes through the region.

The optimum temperature for cotton germination is near 85 degrees F°. Cooler temperatures can lead to poor stands or stand failures if the correct conditions align. Under cool temperatures the physiological processes involved in germination can be very slow which can in turn result in slow growth and perhaps increased susceptibility to various seedling disease pathogens.

It is suggested that planting be delayed until 1) mid-morning temperatures in the rooting zone exceed 60 degrees F° at a 6-inch planting depth, and 68 degrees F° at the 2-inch depth; 2) the five-day forecast indicates dry conditions and at least 25 DD60 heat units; and 3) the five-day forecast projects low temperatures above 50 degrees F°.

The standard calculation for cotton DD60 heat units is:

$$\left( \frac{\text{maximum air temperature, F}^\circ + \text{minimum air temperature, F}^\circ}{2} \right) - 60 = \text{DD60 heat units}$$

Essentially, the average air temperature for the day is determined and the 60 degree F° developmental threshold for cotton is subtracted. The DD60s for each day are then totaled. If one has faith in the local forecast, then the projected high and low for the following several days can be used to calculate DD60s.

Table 1. The outlook for planting for various five-day forecast predictive DD60 accumulations.

Predictive DD60 Accumulation for Five Days Following Planting	Outlook for Planting
<10	Very poor
11-15	Poor
16-25	Marginal
26-50	Good
>51	Very good

[Source: To download Cotton Physiology Today, Planting and Replanting Decisions, April, 2007 click here.](#)

If it is recognized that equipment constraints and large acreages generally require producers to plant during less than optimum conditions, they should realize that seed quality and seeding rate become very important. The seeding rate can be adjusted on the planter. However, with transgenic seed prices and technology fees being expensive, increasing the seeding rate is not a palatable option for most producers. Therefore, seed quality becomes very important.

The Texas Cool Germination test was developed to specifically test cotton seed under cool soil temperature conditions. This germination data is NOT required on the state seed tag, but many seed companies will provide this information if asked. The state seed tag reports Standard Germination data and it is performed in a different manner. It is usually guaranteed on the seed tag at a minimum of 80%. Texas Cool Test data are obtained from a test conducted at 64 degrees F<sup>o</sup> with seedlings counted after 7 days. Higher Cool Test data indicate higher vigor under temperature stressed conditions. If the Cool Test data for a specific lot of cotton seed is known, then potentially more vigorous seed lots can be identified. This can be used to determine the planting sequence and possible planting date. Producers should begin planting with higher vigor seed under cooler temperatures, and finish up with lower vigor seed under warmer temperatures.

Planting conditions for rapid germination and emergence include:

- 1) high quality seed with good to excellent Cool Germination Test data (>60%)
- 2) a favorable 5-day forecast
- 3) minimum air temperature of at least 50 degrees F°, and maximum air temperature of at least 80 degrees
- 4) plant into a firm, moist seedbed about 1 inch deep but not more than 2 inches deep

### **Imbibitional Chilling Injury**

Cool temperatures can adversely affect cotton seedlings. If excessively cool temperatures are encountered during the seed hydration phase, imbibitional chilling injury may occur. Imbibitional chilling injury occurs when cotton seed is subjected to cold conditions during the first 2-3 days after planting, or during the period of time when the seed is imbibing moisture from the surrounding soil. If seeds imbibe cool water too rapidly, embryo cells may be injured or killed due to membrane disruption. Cotton seed contains lipids which must be converted to energy during germination. The cell membranes must properly develop. Cool temperatures can also result in overall slowing of the metabolic processes during germination. Soil temperatures of 50 degrees F° or below around the seed can damage seedlings during this time. Soil temperatures near 40 degrees F° or less may kill or severely injure the seedling.

The three seedlings below were subjected to chilling temperatures during the imbibition phase. During the first six hours of imbibition, the damaged seedlings were exposed to a temperature of 40 degrees F°. After the chilling period they were moved to a chamber set at 86 degrees F° for two to four days. The curling, shortening and thickening of the roots are typical of imbibitional chilling injury. The chilling during this phase of imbibition injures and typically kills the root tip meristematic tissue. This results in cessation of normal taproot growth. Subsequently, lateral roots develop to compensate for this loss. Typically these seedlings may survive and produce productive plants if additional stresses such as water deficit or disease are not encountered.



**Cotton seedlings exhibiting chilling injury**

The two seedlings below show normal root development. When the two groups are compared it may be noted that seedlings injured by chilling are often short with thickened hypocotyls and radicles, dead root tips, and show some signs of lateral root growth.



**Normal cotton seedlings**



## Mesonet Soil Temperatures

Soil temperatures for cotton planting are very important and the Oklahoma Mesonet provides valuable information. It should be noted that the Mesonet 5-cm soil depth is equivalent to 2 inches, and the 10-cm depth is equivalent to 4 inches. Dry soils will warm up faster than moist soils. It is a good idea to have your own soil thermometer so you can check your own specific field situation.

To see the state map of 3-day average 4-inch bare soil temperatures, go to:

[Mesonet 3-day 4-inch bare soil temperature map](#)

To see the state map of current 4-inch bare soil temperatures, click here:

[Mesonet Current 4-inch bare soil temperature map](#)

## Seeding Rate

Stand components consist of both uniformity and density. Uniformity of planting seed in the row is affected by planter type. The newer vacuum planters are extremely effective at controlling vertical distribution of the seed in the seed furrow and horizontal spacing down the row. These modern planters typically provide excellent seed to soil contact capability, which results in an increased likelihood of an individual planted seed being able to germinate. Seeding rate or density is controlled by producer. The newer vacuum planters coupled with the generally higher seed quality today than what we many times encountered in the past, have allowed most producers to successfully reduce seeding rates. However, because of the cost of transgenic varieties in addition to cost of premium insecticide/fungicide/nematicide seed treatments, many producers are pushing the agronomic minimum and living on the edge, with little margin for error, so to speak. Many seeding rate trials have been conducted in southwestern Oklahoma and the Rolling and High Plains regions of Texas over the last several years. Results all point to the fact that seeding rates can be pushed to a lower level than what was generally accepted 10-15 years ago, however, the producer must have extreme faith in the planter and its adjustment, field-specific planting situation, seed quality, and environmental conditions after planting. From a crop insurance perspective, it is difficult to agronomically justify less than 2 seeds/row-ft in 40-inch rows (about 26,000 seeds/acre) as a best management practice in dryland cotton production.

Cotton has a remarkable capacity to compensate yield across a fairly wide range of plant populations. Recent seeding rate studies have indicated that within the FINAL plant stand range of 1.5 to 4.5 plants per row-ft. in 40-inch rows, lint yield can remain reasonably unaffected. However, how a producer gets from a seed drop rate to a final plant stand can be a treacherous journey. Assuming that good soil conditions are present, and an excellent vacuum planter is used to control seed distribution both down

the row and in planting depth, a range of 2-4 seed per row-ft. in 40-inch rows (about 26,000 to 52,000 seeds/acre) is probably acceptable. Under dryland conditions, the low end may be targeted. If poor planting conditions (such as low seed quality, marginal soil moisture in the seeding zone, a large amount of crop residue which may affect seed to soil contact, lack of precision planting equipment, or poor forecast conditions) exist, it may be more important to increase the seeding rate. If a low seeding rate is used, the producer must have high confidence in the seed quality and planter precision/adjustment.

### **Oklahoma Boll Weevil Eradication Organization**

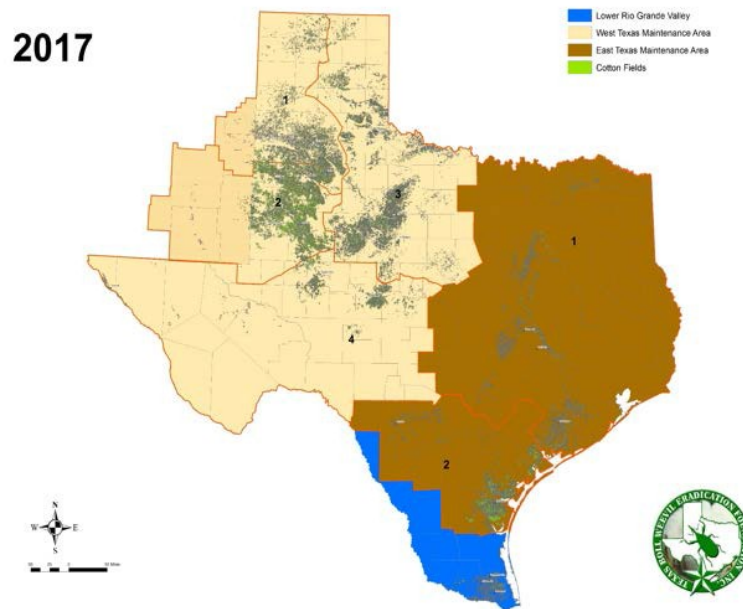
**Web page address click here: [OBWEO](#)**

Brenda Osborne, Director of the Oklahoma Boll Weevil Organization, based at Altus, provided the information below. Eradication of the boll weevil across most of the U.S. Cotton Belt, and in the state has been very successful and is a major contributing factor to the continued profitability of cotton production. It has been a long, difficult, and expensive task to rid our state and most of the Cotton Belt of this invasive species that for such a long time negatively impacted our production. There is still a difficult fight with this insect pest in south Texas, and we all need to do our part in keeping this pest from resurfacing in our state.

OBWEO is preparing for the upcoming 2021 cotton season. It is our responsibility to ensure the continued success of this program. If you have been growing cotton for the past 3-5 years, we know where those fields are located. However, if you are a new producer or have not grown cotton in several years, we need you to provide the legal descriptions of these new cotton fields.

There is a Boll Weevil Assessment for harvested cotton acres. The current assessment is \$2.50 per harvested acre. This assessment is reviewed annually. The trapping density this year is one trap per 640 acres. In areas where planted cotton acreage density is high, not all fields will actually have a trap near it. In other areas that are more isolated, each field will need a trap.

Cotton harvesting equipment entering Oklahoma from two eradication areas in Texas has to be certified as boll weevil free prior to movement into our state. Please contact the equipment departure from these two areas. This will allow TBWEF to inspect the equipment. A USDA-APHIS phytosanitary certificate is issued and is required before equipment can be transported from these areas. These ONLY include the Lower Rio Grande Valley Eradication Zone (blue area on the map below) or the East Texas Maintenance Area (brown area on the map below). This is critical to meet USDA-APHIS requirements and prevent the re-infestation of boll weevils into eradicated areas. It is illegal to move non-certified cotton harvesting equipment from these areas into the state of Oklahoma.



Texas Boll Weevil Eradication Foundation: 325-672-2800  
After Hours and Weekends: 325-668-7361

Contact John Lamb at the Frederick office at 580-335-7760 or cell 580-305-1930 for the following counties: Tillman, Cotton, Comanche, Atoka, Bryan, and Stephens.

Contact Brenda Osborne at the Altus office at 580-477-4287 or cell 580-471-79632 for all other counties.

## CEU and Training Opportunities

Dicamba and Certified Applicators Meeting April 15, 2021 contact your local county extension office for details.

On-line CEU trainings:

This is the only **free** online CEU training that is available that I can find if you are aware of any sites PLEASE contact me and I will list them.

Make certain that is approved for Oklahoma Department of Agriculture and Forestry and is designated IA.

That will be the only training that will be credited for Oklahoma private applicator license.

### [AG CEU Online](#)

The Cotton Comments Newsletter is maintained by Jerry Goodson, Extension Assistant. If you would like to receive this newsletter via email, send a request to:

[jerry.goodson@okstate.edu](mailto:jerry.goodson@okstate.edu)

Jerry Goodson  
Extension Assistant  
16721 US Hwy. 283  
Altus, Oklahoma  
(580) 482-8880 office  
(580) 482-0208 fax

[www.cotton.okstate.edu](http://www.cotton.okstate.edu)

[www.ntokcotton.org](http://www.ntokcotton.org)

Oklahoma State University in compliance with Title VI and VII of the Civil Rights Act of 1964, Executive Order 11246 as amended, Title IX of the Education Amendments of 1972, Americans with Disabilities Act of 1990, and other federal laws and regulations does not discriminate on the basis of race, color, national origin, sex, age, religion, disability, or status as a veteran in any of its policies, practices, or procedures. This includes but is not limited to admissions, employment, financial aid, and educational services.