

Place your date and meeting title here.....

Presented by: Your name



A Century-Old Partnership:

OHCE and OCES

Past, Present and Future

- » 1862: Morrill Act was passed by the US Legislature and signed by President Abraham Lincoln establishing land grant universities in each state.
- » 1890: A second Morrill Act added black public colleges and institutions in 16 southern states to the land grant system
- » Oklahoma's 1890 university: Langston University
- » 1994: Legislation passed to fund Tribal Colleges Extension Services

Beginnings of the Land Grant University System



» 1914: Cooperative Extension Service was formally established in each state with the passage of the Smith-Lever Act. It provided for vocational education in the areas of agriculture and home economics for individuals not attending college



The Cooperative Extension Service arrives across the country extending the university into the counties.



- » Food preservation
- » Mattress making
- » Quilting
- » Supporting 4-H
- » Kitchen improvement contests
- » Sewing clothing and household linens
- » Providing balanced lunches for children in school



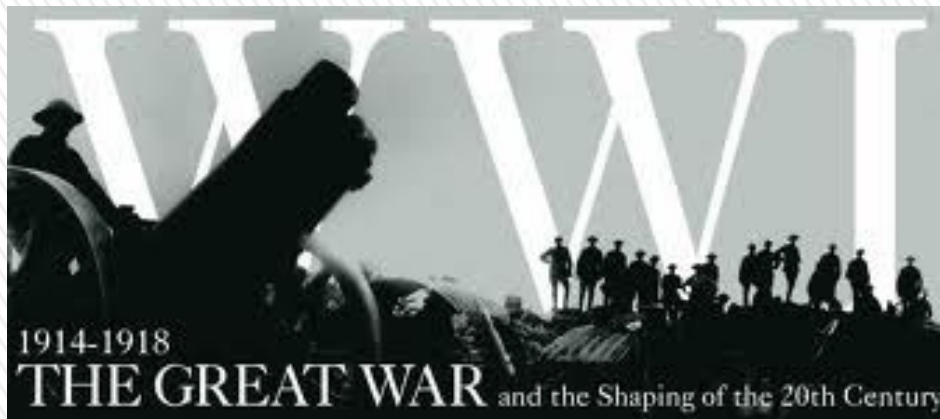
Home Economics lesson topics for the first Extension Homemakers



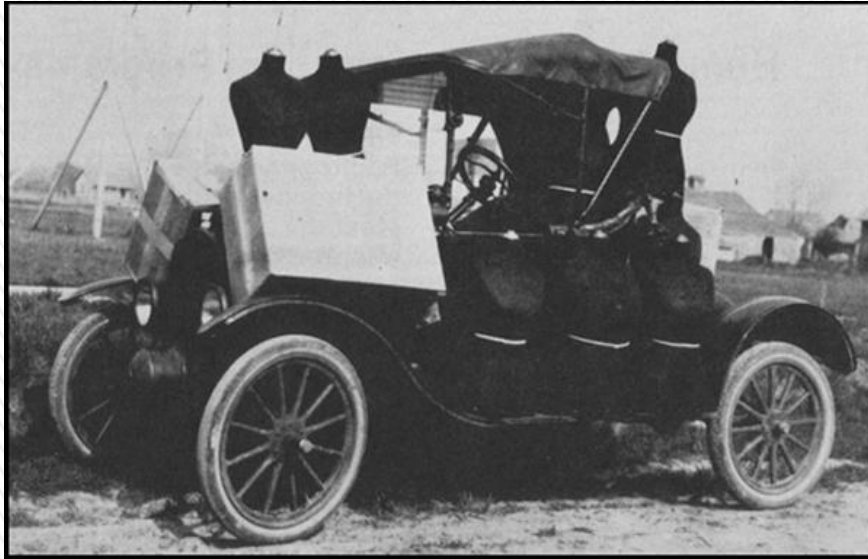
WWI Era: Late teens and early 1920s



- Home Economics Agents and their audiences joined the war effort by
 - Increasing individual food production, growing gardens and preserving the fruits (and vegetables) of their labor
 - Making comfort kits for the Red Cross
 - During the Great Depression soon after the end of WWI, emphasis was placed on maintaining safe diets at a minimum cost
 - In 1928 the prevention of pellagra was a major focus



Some traveled by car



Home Demonstration Agent: (From a 1920 annual report)
Hauled her teaching materials over rough roads.

Some traveled by horse and buggy



In the early days, Home Demonstration Agents traveled to meet on farms with Extension Homemakers (EH)



» 1929: Extension Homemakers receiving sewing instructions



An informal partnership and later a formal partnership between OHCE and OCES has been present since the beginning of the Cooperative Extension Service in Oklahoma



- » “Audiences” or “homemakers” that received educational training from OCES Home Demonstration Agents formally organized during Farmer’s Week with the establishment of:



The Oklahoma State Home Demonstration Council

- > **July 24, 1935 in Stillwater**
- > Formed state council consisting of state officers
- > Purpose of state council was to strengthen and unify the **County Extension Home Demonstration Programs**

**FORMALIZATION OF THE OCES PARTNERSHIP
WITH OHCE!**



- » Clubs raised money for pressure cookers for all to share and to buy buildings to hold club meetings
- » They raised money to modernize the kitchens in their meeting places
- » In 1935 the various “**state clubs**” organized to form a national organization for Extension Homemaker clubs. Oklahoma didn’t vote to join the National Home Demonstration Council until 1944.



During the 1930s



Issues addressed by Home Demonstration Agents for homemakers included:

- » Health and safety
- » Family relations
- » Education
- » Libraries
- » 4-H
- » Home and community beautification



Also during the 1930s



- » County Health Departments were established due to pressure from homemakers groups
- » School lunch programs were started by homemakers preparing hot soup to serve to children at lunch time
- » Homemakers groups were responsible for rural reading programs, traveling libraries and the establishment of many community libraries.



1930s Homemaker Groups Accomplishments



- » Club treasuries were financed through the sale of home products including
 - > Clothing
 - > Needlework
 - > Rugs
 - > Fruit cakes
 - > Jellies and Jams
- » Family income became supplemented by homemakers who helped members sell surplus farm products at “Curb Markets”



Homemakers money making efforts to improve the quality of family life in the 1930s ➤

- » Recycled men's suits to jackets and skirts for women
- » Made soap from surplus fats
- » Made mattresses to help use up surplus cotton
- » At group meetings Extension Agents provided education on dealing with droughts, dust storms, and grasshopper plagues



Homemakers were as resourceful in the 1930s as they are today



- » WWII caused a recession felt by all. Homemakers learned from Extension Agents ways to “eat it up, wear it out, make it do, or how to do without.”
- » Rationing of gas and tires reduced members attending state and national meetings.
- » Clubs promoted the training of at least one member of each household in first aid and home nursing because of the health care shortage of the time.



The 1940s brought a new era of issues that were addressed by Homemakers and Extension



» Home Demonstration Council members

- > Sponsored child immunization clinics
- > Made United Nations flags for schools
- > Taught each other how to improve and remodel homes
- > Taught each other how to use new labor-saving electricity powered equipment
- > Harmon County Council helped to pay the salary for a RN in their county



Homemakers continued to support their communities and each other in the 1940s



- » Issues for education included polio, flies, raw sewage. Community and home grounds clean up became the emphasis. Roadside parks, road markers, and community signs were club projects.
- » Folks were traveling more and more on highways. Allstate Insurance company provided safety seminars annually until 1975.
- » NATIONAL EXTENSION HOMEMAKERS CLUB was credited for beginning action to get drunk drivers off the road and seatbelt legislation.



Arriving with the 1950s were new issues to be addressed...



- » EH clubs joined in Lady Bird Johnson's beautification contest with clean-up campaigns
- » New research findings on the importance of good nutrition for children created new needs for teaching nutrition through EH clubs
- » 1969 Rubella vaccine was developed, and EH clubs began the campaign to convince parents to immunize children.
- » New topics for Extension demonstrations emerged including: freeze drying and Teflon

During the 1960s



- » More women began working outside of the home and EH membership began to decline
- » Drug and alcohol abuse affected highway safety which influenced OCES and EH programming
- » The national board began using member's given names rather than their husbands' names in their directory
- » NEHC by-laws were reviewed and a non-discrimination clause was added to meet Affirmative Action regulations
- » Men began to slowly join EH clubs. Learning sessions began to include topics of interest to men
- » EH clubs continued to work extensively with 4-H and county fairs. They were learning about management skills, achieving financial stability, and leadership skills.
- » Recruitment of minorities to join EH clubs became a focus.



Then came the 1970s

- » In 1985 was the 50th anniversary of the Oklahoma State Home Demonstration Council (Established in 1935)
- » In 1986 NEHC celebrated it's 50th anniversary
 - > Charter members were honored
 - > 2867 fifty-year clubs were recognized
 - > Clubs planted marigolds throughout the country to commemorate the golden future on the golden anniversary
 - > Members looked back on their past accomplishments and began building on the future



1980s Celebrations



» Continued and emerging issues to be addressed by OCES and EH included:

- > Play ground safety
- > Farmer's role in feeding the world
- > Children's fairs
- > Preservation of the art of quilting and other heritage skills
- > Nutrition
- > Finances including wills and estate planning
- > Day care employee training
- > Home hazards
- > Power tool and traffic safety
- > Seatbelt use



In the 1980s issues continued to evolve



- » During this decade, NEHC was one of the largest adult volunteer education organization in the country
- » NEHC members reached out to share researched based information with millions of non-members
- » In 1992 NEHC became National FCE and Oklahoma EH became Oklahoma Association for Family and Community Education (FCE)
- » 1996: Oklahoma was #1 in the nation in membership with 5,000 members three years in a row
- » Mail fraud: The FCE Sting was carried out when data was delivered to the Attorney General's office
- » Family, global, environmental and safety issues were focuses for leader lessons



1990s, the last decade of a century



- » 2000 – Oklahoma members voted to disaffiliate with NFCE and changed their name to Oklahoma Home and Community Education (OHCE)
- » Focus for adult and community education included: Cemetery indexing, Medicaid/Medicare fraud, walking/exercise programs for members and in schools, support for the military and their families
- » Adopted new and meaningful emblem designed by Betty Auld of Grady County



The new century: 2000 - 2010





- Circle: Continuity of life in our state, our home and our communities
- Candle: Unity of goals and purposes of OHCE – *It is better to light just one candle*
- 77 bites on edge of seal: Represents 77 counties and how they work together to turn our world into a better society
- Great State of Oklahoma: Represents our home
- Est. 1935: Represents the long-standing heritage and traditions of OHCE

A new century – a new beginning



- » 75th anniversary celebrated in 2010
- » Leadership development is emphasized
- » Drive by fruiting project
- » Raising Young Readers with “Growing Strong Minds and Bodies” curriculum kit is current state project



2010 and beyond...



Oak College HCE Host Walk For “Women Walk The World” Event



MAKING A DIFFERENCE IN THE WORLD: Oak College HCE hosted a walk this past Monday morning in the downtown area as part of the Associated Country Women of the World Day held throughout the world to join women in promoting the organization and raise funds in support of women and communities worldwide in support of worthwhile causes around the globe. Thanks for everyone and all the other volunteers that took part!

OHCE continues to educate, raise funds and recruit new members!



2015: The future of OHCE Programs is in your hands!

Place your focus for the meeting here

- » If your focus is increasing membership, elaborate and list handouts like membership forms here.
- » If your focus is cultural enrichment elaborate about the OHCE cultural enrichment goals and provide ideas for follow through here.
- » If your focus is about submitting awards, place your items for discussion and handouts here.
- » Etc.



VISIT: <http://ohce.okstate.edu> to find forms and other resources.
Contributors to the content of this lesson include Lani Vasconcellos, Cindy Clampet and Gloria King.



**Thanks for all you do for OHCE and
OCES! Your efforts are appreciated!**

