

2011 USDA-AMS Cotton Varieties Planted

- **Oklahoma Via Abilene Classing Office:**
 - 1% All-Tex
 - 4% Americot / NexGen
 - 51% Deltapine
 - 16% DynaGro
 - 26% FiberMax
 - 2% Stoneville
 - 1% PhytoGen

 - 0.2% Conventional
 - 98% Bollgard 2 Bt
 - <1% Widestrike Bt
 - <1% Roundup Ready Flex Only
 - 99% Stacked (Roundup Ready Flex with Bollgard 2 or Widestrike)
 - 99.7% Transgenic

Cotton Varieties Planted 2011 Crop



U. S. DEPARTMENT OF AGRICULTURE
Agricultural Marketing Service - Cotton Program
Memphis, Tennessee
September 8, 2011

mp_cn833

Dr. Randy Boman
OSU Southwest Research
and Extension Center, Altus

“Domestic” Base Quality

- 34 staple
- 26 g/tex strength
- 3.5 to 4.9 micronaire
- 80 to 82 length uniformity index
- 41 color
- 4 leaf



Mike Watson
Cotton Incorporated



Base Quality for High End Domestic & Basic International

- **35 staple**
- **28 g/tex strength**
- **3.8 to 4.6 micronaire**
- **82 to 83 length uniformity index**
- **31 color (international)**
- **3 leaf (international)**



Mike Watson
Cotton Incorporated



Commodity Credit Corporation Loan Chart

- High Volume Instrument (HVI) quality parameters and classer's calls used to determine Commodity Credit Corporation (CCC) Loan Value

PLAINS Cotton Cooperative Association
 Phone (806) 763-8011 P.O. Box 2827 3301 East 50th Street Lubbock, Texas 79408

CCC LOAN RATES 2011-12 CROP
 POINTS PER POUND
 NET WEIGHT

WHITE											
Color	Leaf	26-29	30	31	32	33	34	35	36	37+	
SM & Better 11 & 21	1	4985	5030	5040	5050	5220	5410	5510	5585	5700	
	2	1885	5030	5040	5050	5220	5410	5510	5585	5700	
	3	4935	5015	5025	5035	5210	5405	5505	5580	5695	
	4	4885	4965	4975	5015	5135	5335	5435	5510	5625	
	5	4775	4850	4860	5000	5010	5150	5330	5385	5400	
	6	4585	4655	4735	4745	4825	4900	4970	4985	4995	
	7	4480	4580	4635	4605	4675	4750	4810	4875	4835	
	8	1200	1200	1200	1200	1200	1200	1200	1200	1200	1200
MID 31	1	4935	5010	5025	5035	5210	5385	5540	5620	5630	
	2	4835	5010	5025	5035	5210	5385	5540	5620	5630	
	3	4805	4965	5015	5025	5135	5300	5515	5575	5585	
	4	4820	4880	4875	4865	5065	5275	5380	5465	5485	
	5	4725	4800	4800	4870	4855	5105	5300	5340	5380	
	6	4510	4510	4710	4725	4815	4885	4940	4955	4965	
	7	4435	4515	4570	4565	4665	4760	4765	4805	4815	
	8	1200	1200	1200	1200	1200	1200	1200	1200	1200	1200
SLM 41	1	4755	4805	4855	4815	5055	5250	5340	5375	5375	
	2	4755	4805	4855	4815	5055	5250	5340	5375	5375	
	3	4755	4805	4855	4815	5055	5250	5340	5375	5375	
	4	4680	4755	4860	4865	5005	5200	5285	5325	5325	
	5	4555	4725	4770	4700	4810	5005	5075	5150	5150	
	6	4435	4555	4630	4660	4735	4810	4850	4870	4870	
	7	4380	4430	4475	4505	4570	4585	4665	4680	4680	
	8	1200	1200	1200	1200	1200	1200	1200	1200	1200	1200
LM 51	1	4605	4655	4680	4720	4860	4845	5005	5025	5025	
	2	4605	4655	4680	4720	4860	4845	5005	5025	5025	
	3	4605	4655	4680	4720	4860	4845	5005	5025	5025	
	4	4605	4655	4680	4720	4860	4845	5005	5025	5025	
	5	4580	4605	4655	4645	4735	4830	4855	4810	4810	
	6	4335	4430	4490	4530	4610	4670	4705	4725	4725	
	7	4280	4330	4380	4415	4480	4505	4545	4545	4545	
	8	1200	1200	1200	1200	1200	1200	1200	1200	1200	1200
SGO 61	1	4580	4585	4575	4585	4655	4740	4775	4775	4775	
	2	4580	4585	4575	4585	4655	4740	4775	4775	4775	
	3	4580	4585	4575	4585	4655	4740	4775	4775	4775	
	4	4580	4585	4575	4585	4655	4740	4775	4775	4775	
	5	4530	4565	4575	4565	4655	4740	4775	4775	4775	
	6	4335	4360	4430	4410	4500	4515	4570	4590	4590	
	7	4280	4280	4305	4315	4385	4460	4490	4495	4495	
	8	1200	1200	1200	1200	1200	1200	1200	1200	1200	1200
OO 71	1	4225	4235	4245	4255	4350	4415	4440	4440	4440	
	2	4225	4235	4245	4255	4350	4415	4440	4440	4440	
	3	4225	4235	4245	4255	4350	4415	4440	4440	4440	
	4	4225	4235	4245	4255	4350	4415	4440	4440	4440	
	5	4225	4235	4245	4255	4350	4415	4440	4440	4440	
	6	4225	4235	4245	4255	4320	4415	4440	4440	4440	
	7	4190	4200	4210	4220	4275	4375	4390	4390	4390	
	8	1200	1200	1200	1200	1200	1200	1200	1200	1200	1200

COTTON NOT ELIGIBLE FOR LOAN INCLUDES BALES:

MIX PACKED	FALSE-PACKED	WATER PACKED	LESS THAN 325 LBS
WATER DAMAGED	IRL DAMAGED	IL PACKED	OR MORE THAN 600
W/GRIND	GIN CUT		LBS NET WEIGHT.

BASE 5200

LIGHT SPOTTED											
Color	Leaf	26-29	30	31	32	33	34	35	36	37+	
SM & Better 12 & 22	1	4870	4920	4935	4995	5125	5275	5385	5455	5465	
	2	4870	4920	4935	4995	5125	5275	5385	5455	5465	
	3	4870	4920	4935	4995	5125	5275	5385	5455	5465	
	4	4870	4920	4935	4995	5125	5275	5385	5455	5465	
	5	4870	4920	4935	4995	5125	5275	5385	5455	5465	
	6	4870	4920	4935	4995	5125	5275	5385	5455	5465	
	7	4870	4920	4935	4995	5125	5275	5385	5455	5465	
	8	1200	1200	1200	1200	1200	1200	1200	1200	1200	1200
MID 32	1	4825	4875	4900	4925	5080	5180	5235	5295	5295	
	2	4825	4875	4900	4925	5080	5180	5235	5295	5295	
	3	4825	4875	4900	4925	5080	5180	5235	5295	5295	
	4	4825	4875	4900	4925	5080	5180	5235	5295	5295	
	5	4825	4875	4900	4925	5080	5180	5235	5295	5295	
	6	4825	4875	4900	4925	5080	5180	5235	5295	5295	
	7	4825	4875	4900	4925	5080	5180	5235	5295	5295	
	8	1200	1200	1200	1200	1200	1200	1200	1200	1200	1200
SLM 42	1	4765	4780	4780	4835	4935	5035	5105	5170	5170	
	2	4765	4780	4780	4835	4935	5035	5105	5170	5170	
	3	4765	4780	4780	4835	4935	5035	5105	5170	5170	
	4	4765	4780	4780	4835	4935	5035	5105	5170	5170	
	5	4765	4780	4780	4835	4935	5035	5105	5170	5170	
	6	4765	4780	4780	4835	4935	5035	5105	5170	5170	
	7	4765	4780	4780	4835	4935	5035	5105	5170	5170	
	8	1200	1200	1200	1200	1200	1200	1200	1200	1200	1200
LM 52	1	4610	4620	4610	4675	4780	4815	4855	4880	4880	
	2	4610	4620	4610	4675	4780	4815	4855	4880	4880	
	3	4610	4620	4610	4675	4780	4815	4855	4880	4880	
	4	4610	4620	4610	4675	4780	4815	4855	4880	4880	
	5	4610	4620	4610	4675	4780	4815	4855	4880	4880	
	6	4610	4620	4610	4675	4780	4815	4855	4880	4880	
	7	4610	4620	4610	4675	4780	4815	4855	4880	4880	
	8	1200	1200	1200	1200	1200	1200	1200	1200	1200	1200
SGO 62	1	4360	4415	4435	4445	4505	4505	4505	4510	4510	
	2	4360	4415	4435	4445	4505	4505	4505	4510	4510	
	3	4360	4415	4435	4445	4505	4505	4505	4510	4510	
	4	4360	4415	4435	4445	4505	4505	4505	4510	4510	
	5	4360	4415	4435	4445	4505	4505	4505	4510	4510	
	6	4360	4415	4435	4445	4505	4505	4505	4510	4510	
	7	4360	4415	4435	4445	4505	4505	4505	4510	4510	
	8	1200	1200	1200	1200	1200	1200	1200	1200	1200	1200

MICRONAIRE DIFFERENCES	STRENGTH DIFFERENCES	UNIFORMITY DIFFERENCES
MIC GRP	PTS	PTS
REBARK	15.5-19.2	-275
1,3 & above	10.5-20.4	-275
2	20.5-21.4	-275
3	21.5-22.4	-275
4	22.5-23.4	-180
5	23.5-24.4	180
6	24.5-25.4	180
7	25.5-26.4	180
8	26.5-27.4	180
9	27.5-28.4	180
10	28.5-29.4	180
11	29.5-30.4	180
12	30.5-31.4	180
13	31.5-32.4	180
14	32.5-33.4	180

BARK AND EXTRANEUS DISCOUNTS	COLDR GRADE	LEAF GRADE	STAPLE	LOAN
TX-NM-OK-KS-BARK	1-11	1-11	1-11	1-11
OT-HER BARK	-375	-710	-82	-8
LX-IRAN-FIOUS	375	710	82	8
PREPARATION	-110	-675	85	18



By Bale Classing Recap

GIN: 50426 USDA / PCCA SKT CLASS RECAP
 GIN NAME: Cotton Growers Gin
 ACCOUNT - LOT: 55 - 00 OSU - WOSC FARM

01/26/2010 PAGE: 1
 15:48
 40 65-00599

TAG	RECEIVE	CLR	REMARKS				TRASH						LOAN			
TYPE	DATE	GR	ST	LF	MIC	CLR	QD	RD	+B	M	LNG	STRN	UNI	RATE		
1164140	Ori	01/19/10	31	35	4	34	/	31	1	78.7	075	08	108	30.9	81.0	.5270
1164141	Ori	01/19/10	31	34	3	37	/	31	2	78.3	075	03	107	30.4	80.7	.5380
1164142	Ori	01/19/10	31	35	3	41	/	31	1	78.9	076	03	108	30.7	80.6	.5590
1164143	Ori	01/19/10	31	35	3	42	11/	31	1	78.6	076	04	110	30.1	80.9	.5345
1164144	Ori	01/19/10	31	35	3	42	11/	31	2	78.4	076	03	110	30.3	80.7	.5345
1164145	Ori	01/19/10	31	35	3	42	/	31	1	78.7	079	05	109	28.6	80.8	.5545
1164146	Ori	01/19/10	31	35	3	41	/	31	2	78.1	078	03	110	30.1	81.0	.5570
1164147	Ori	01/20/10	31	35	3	43	/	31	2	77.7	078	04	110	29.0	80.5	.5530
1164148	Ori	01/19/10	31	35	3	42	/	31	2	78.4	077	02	109	28.2	79.7	.5545
1164149	Ori	01/19/10	31	35	3	43	/	31	1	78.7	075	03	108	29.6	81.1	.5555
1164150	Ori	01/19/10	31	36	2	41	/	31	1	79.4	076	02	111	29.8	81.0	.5660
1164151	Ori	01/19/10	31	35	3	40	/	31	1	80.0	078	02	109	28.2	79.0	.5470
1164152	Ori	01/19/10	31	34	2	41	/	31	1	79.9	075	02	107	28.1	80.1	.5375
1164153	Ori	01/19/10	31	35	2	40	/	31	1	80.2	074	02	109	28.5	78.7	.5485
1164154	Ori	01/19/10	31	34	3	42	/	31	1	80.2	076	02	107	28.3	79.9	.5355
1164155	Ori	01/19/10	31	35	2	42	/	31	1	80.2	075	02	109	28.5	81.6	.5560
1164156	Ori	01/19/10	21	35	2	41	/	21	2	80.5	078	02	109	29.6	80.4	.5640



By Farm Classing Summary

GIN: 50426 USDA / PCCA SKT CLASS RECAP
 GIN NAME: Cotton Growers Gin
 ACCOUNT - LOT: 55 - 00 OSU - WOSC FARM

01/26/2010 PAGE: 4
 15:48
 40 65-00599

COLOR GRD	DISTRIBUTION	STAPLE	DISTRIBUTION	MIC	DISTRIBUTION
21	11 10.58%	33	3 2.88%	33	2 1.92%
31	90 86.54%	34	45 43.27%	34	3 2.88%
41	3 2.88%	35	55 52.88%	37	3 2.88%
		36	1 0.96%	39	12 11.54%
				40	32 30.77%
				41	22 21.15%
				42	21 20.19%
				43	7 6.73%
				44	2 1.92%

LENGTH	DISTRIBUTION	STRENGTH	DISTRIBUTION	UNIFORMITY	DISTRIBUTION
103	1 0.96%	26	1 0.96%	78	7 6.73%
104	2 1.92%	27	5 4.81%	79	18 17.31%
105	6 5.77%	28	25 24.04%	80	42 40.38%
106	17 16.35%	29	46 44.23%	81	34 32.69%
107	22 21.15%	30	22 21.15%	82	3 2.88%
108	24 23.08%	31	5 4.81%		
109	23 22.12%				
110	8 7.69%				
111	1 0.96%				

LEAF GRADE	DISTRIBUTION	TRASH METER	DISTRIBUTION
2	56 53.85%	1	1 0.96%
3	47 45.19%	2	64 61.54%
4	1 0.96%	3	25 24.04%
		4	9 8.65%
		5	2 1.92%
		6	2 1.92%
		8	1 0.96%

REMARKS DISTRIBUTION
 8 7.69% BALES LIGHT BARK



By Farm Classing Summary (continued)

***** A V E R A G E S *****

COLOR1	COLOR2	STAPLE	LEAF	MIC	TRSHM	LENGTH	STRENGTH	UNIFORMITY	LOAN RATE
2.9	1.0	34.5	2.5	40.4	2.6	107.6	28.9	80.1	0.5424

TOTAL CLASS AVERAGED =>	104	TOTAL REVIEW CLASS	=>	0
TOTAL REWORK CLASS =>	0	TOTAL CORRECTION CLASS	=>	0
TOTAL ORIGINAL CLASS =>	104	TOTAL DUPLICATE CLASS	=>	0
TOTAL ONLINE CLASS =>	0	TOTAL CERT FIBERMAX	=>	0

TOTAL LOAN INELIGIBLE =>	0
TOTAL LOAN ELIGIBLE =>	104

** NOTE: LOAN INELIGIBLE BALES ARE EXCLUDED FROM THE
AVERAGE LOAN RATE CALCULATION.
BALES WITHOUT RECEIVING ARE MARKED WITH AN '*'
AND USE SCALE TICKET WEIGHT FOR AVERAGES
FINAL INVOICES ARE BASED ON TRUE RECEIVING WEIGHT

TOTAL RECEIVED BALES	=>	104
TOTAL BALES NOT RECEIVED	=>	0
TOTAL NET WEIGHT	=>	50,759



Color Grades of Upland Cotton

Decreasing quality



Decreasing quality

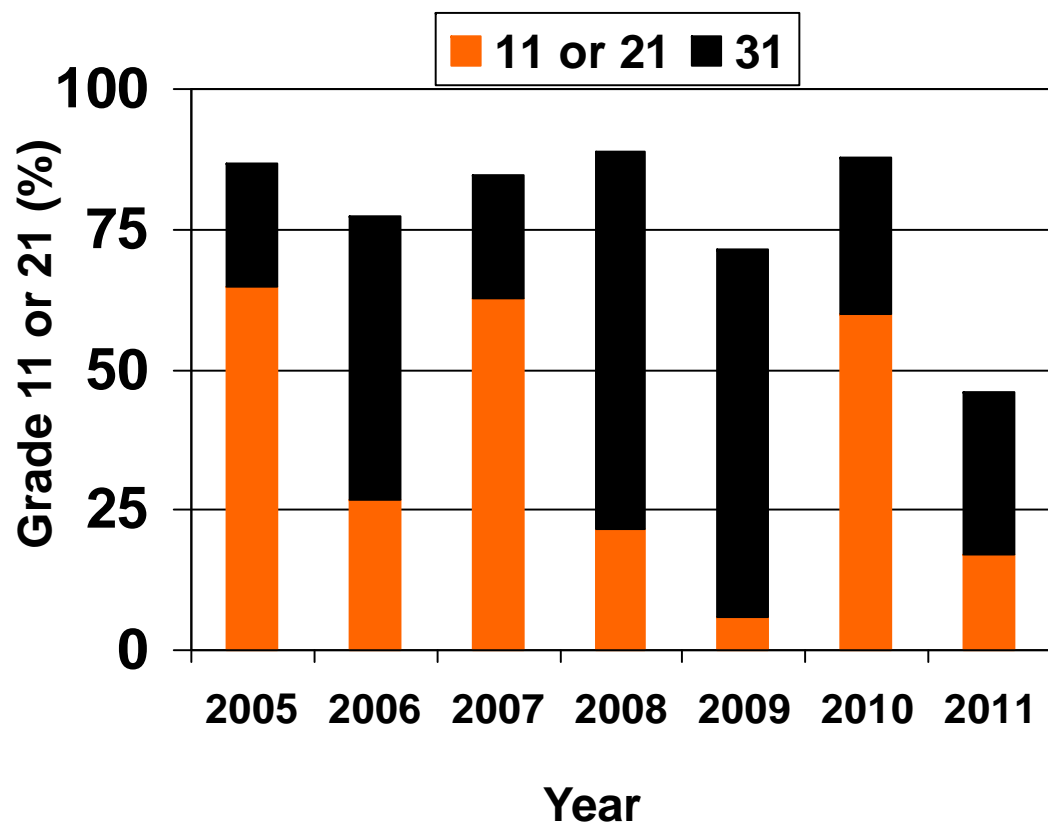


	White	Light Spotted	Spotted	Tinged	Yellow Stained
Good Middling	11*	12	13	--	--
Strict Middling	21*	22	23*	24	25
Middling	31*	32	33*	34*	35
Strict Low Middling	41*	42	43*	44*	--
Low Middling	51*	52	53*	54*	--
Strict Good Ordinary	61*	62	63*	--	--
Good Ordinary	71*	--	--	--	--
Below Grade	81	82	83	84	85

*actual physical standards, all others are descriptive



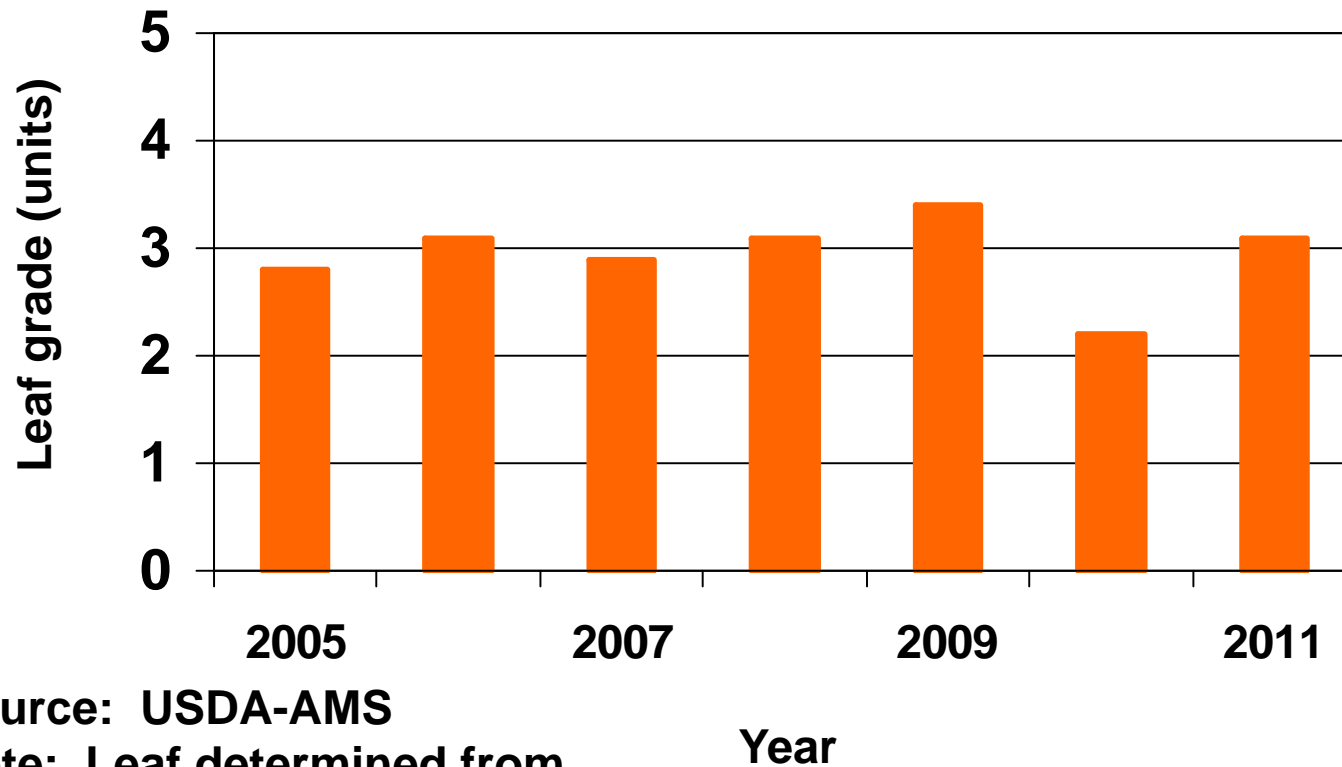
Oklahoma Percent Color Grades 2005-2011



Source: USDA-AMS



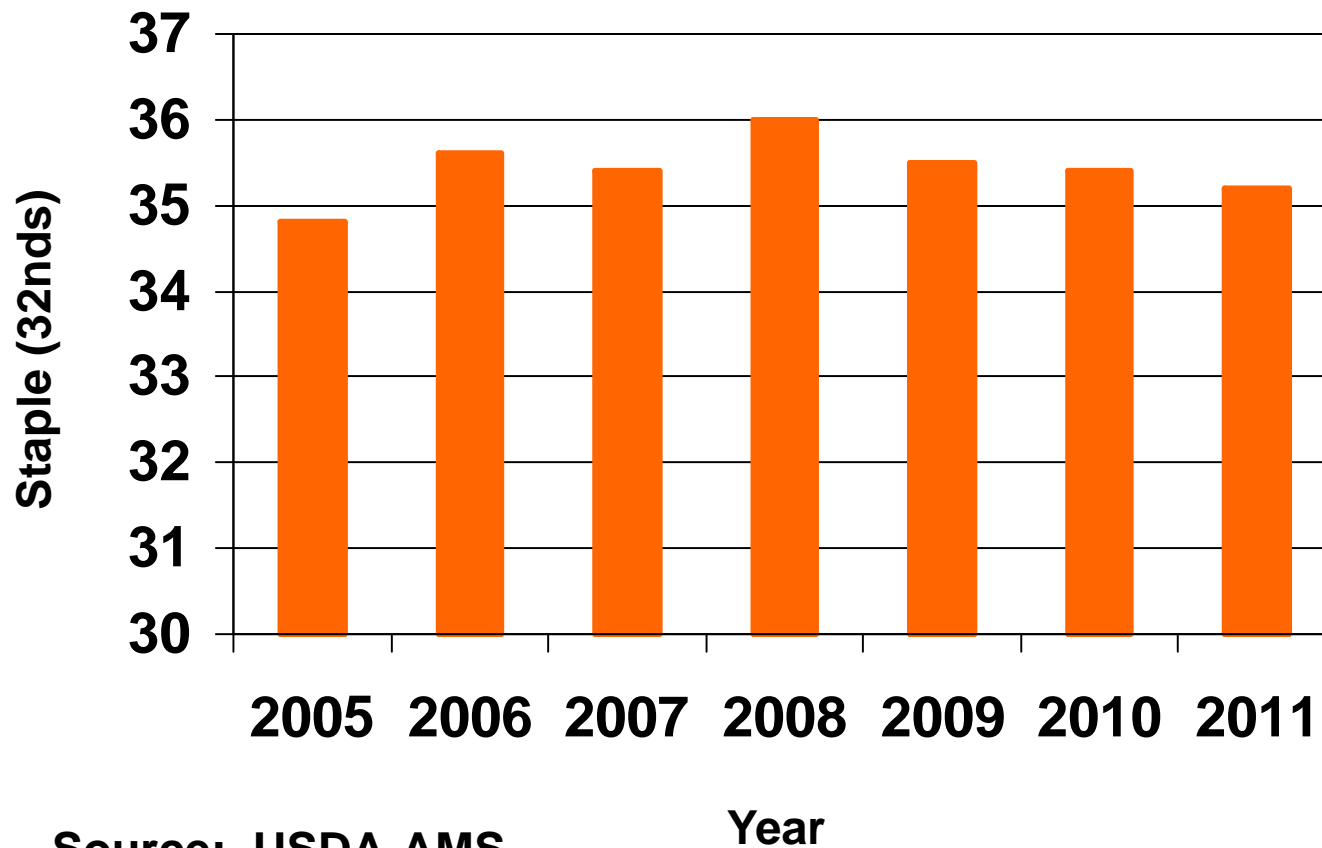
Oklahoma Average Leaf Grades 2005-2011



Source: USDA-AMS
Note: Leaf determined from
HVI trash beginning in 2011



Oklahoma Average Staple 2005-2011

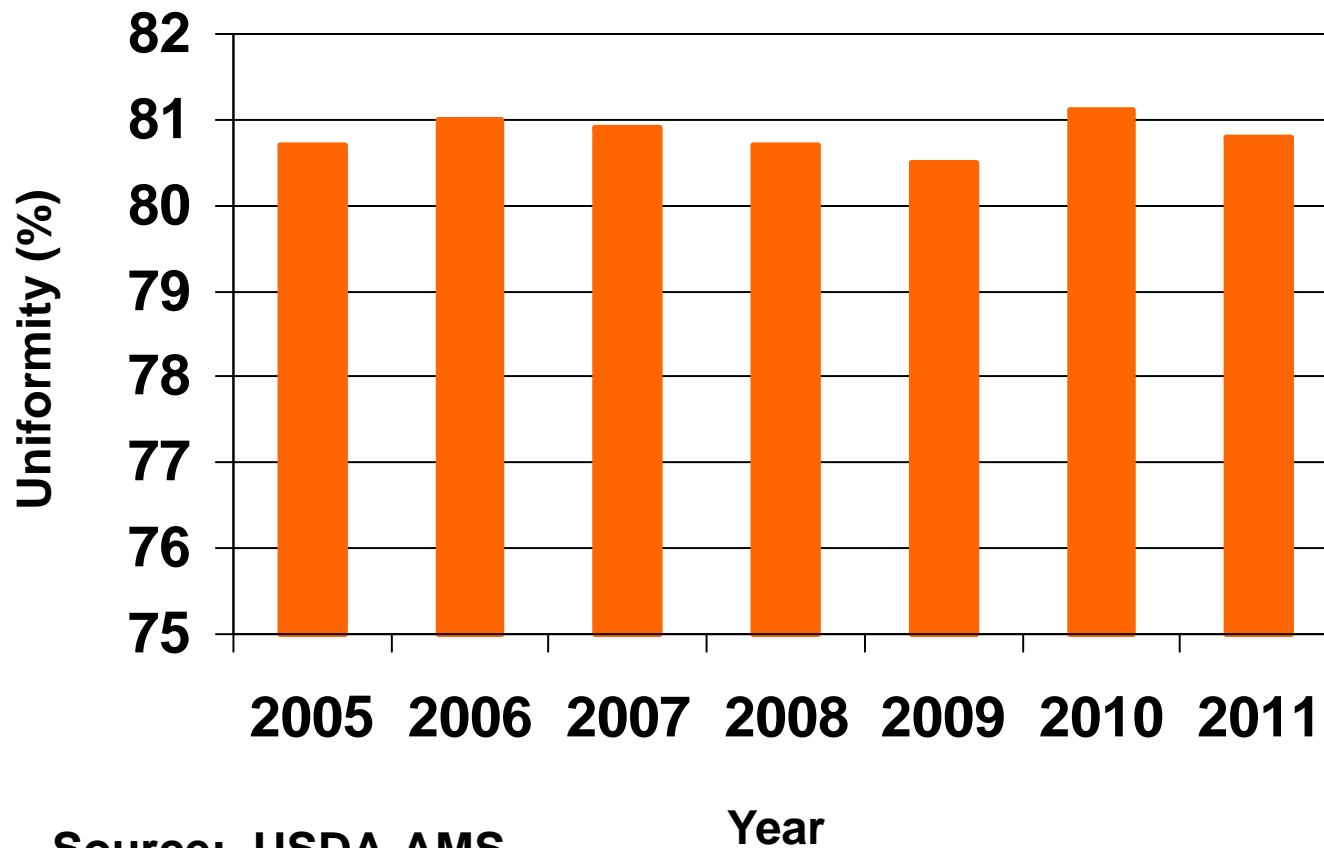


Source: USDA-AMS

Year



Oklahoma Average Uniformity 2005-2011

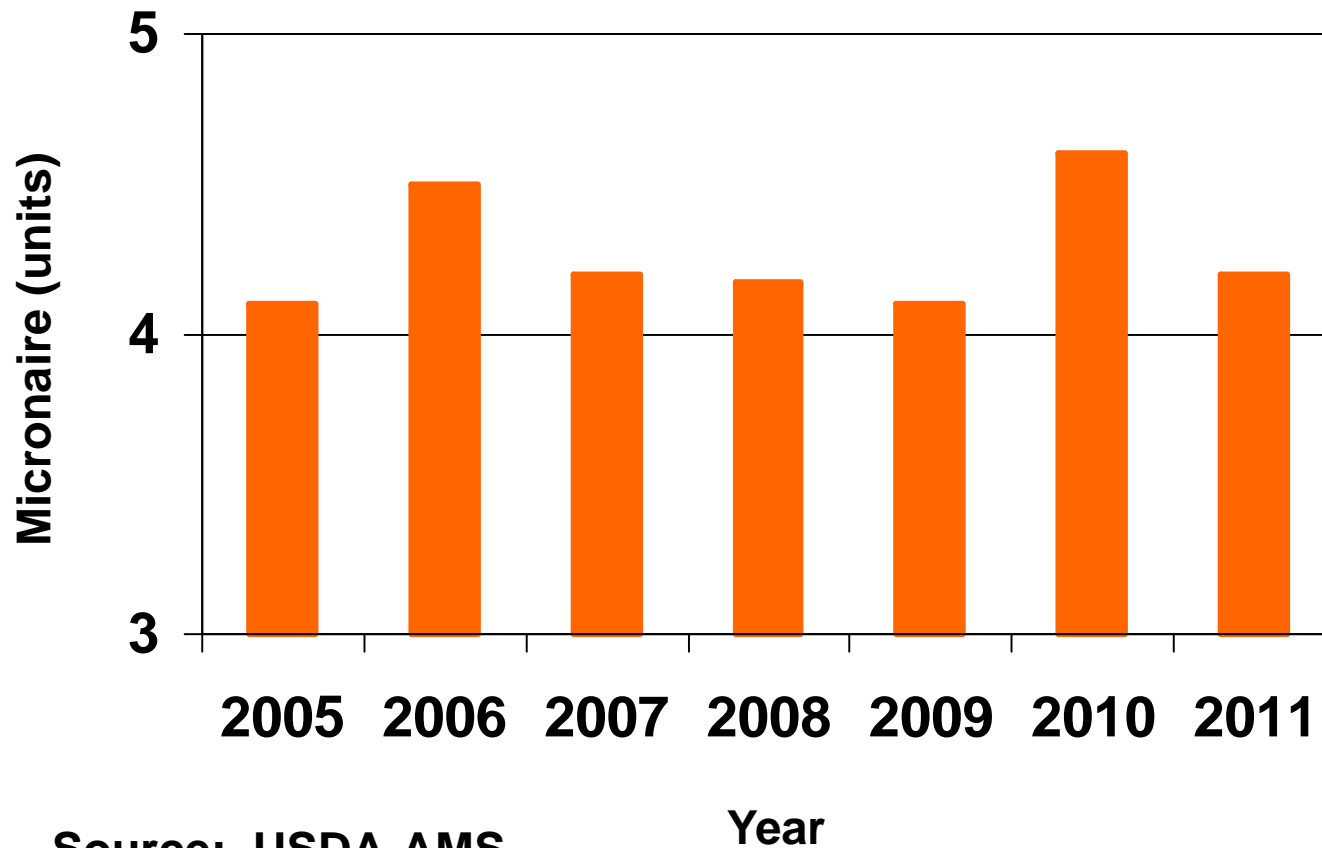


Source: USDA-AMS

Year



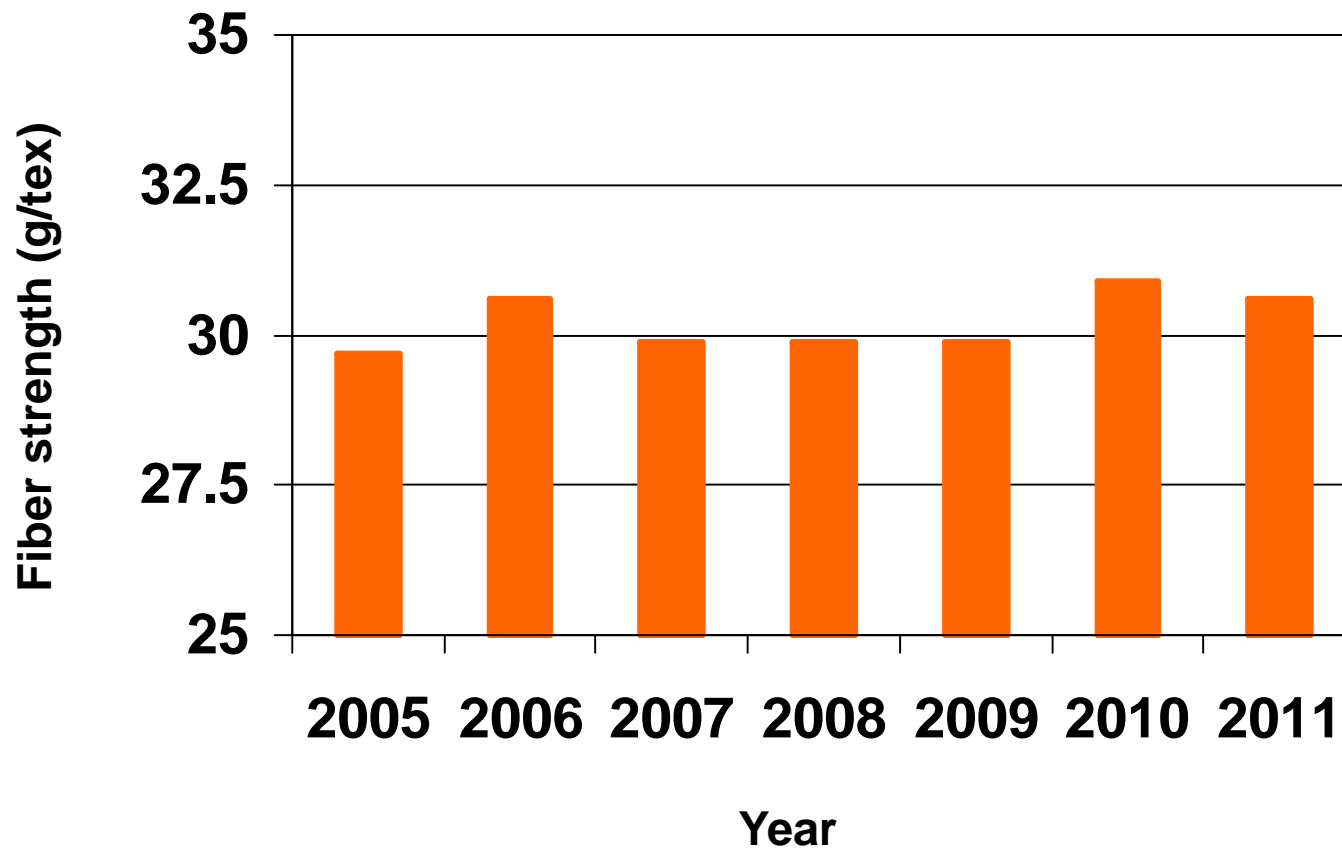
Oklahoma Average Micronaire 2005-2011



Source: USDA-AMS



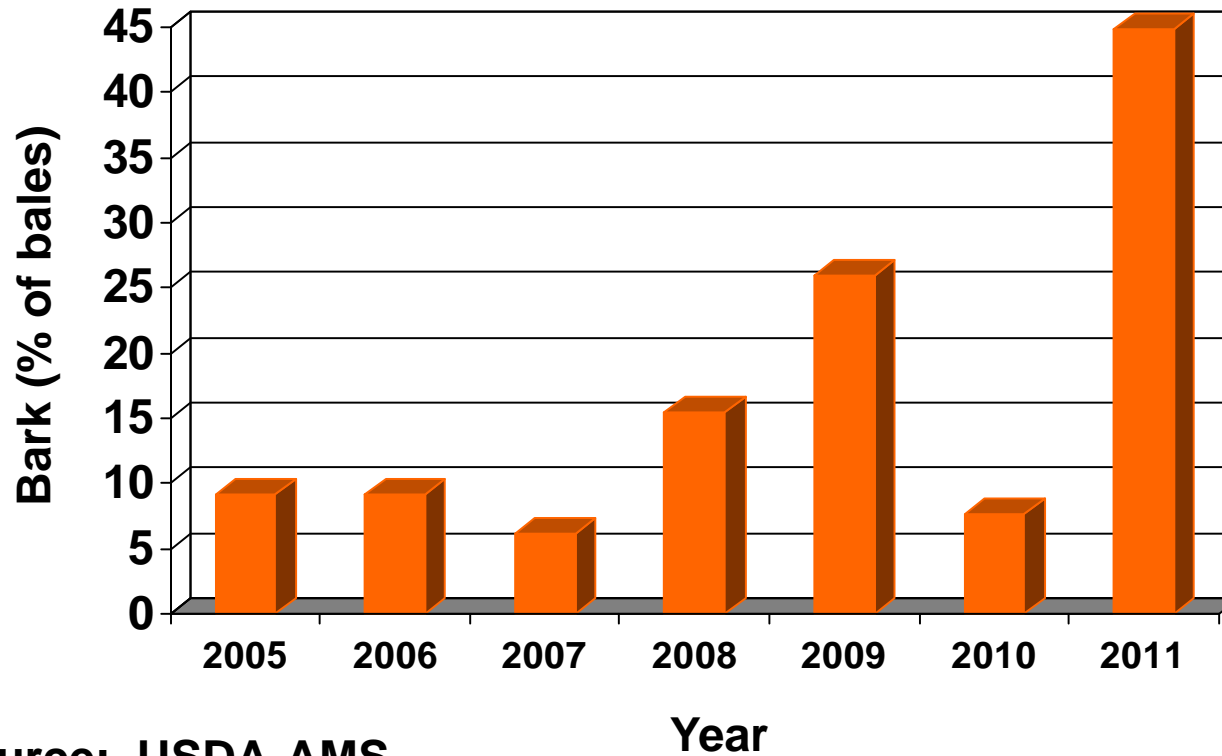
Oklahoma Average Fiber Strength 2005-2011



Source: USDA-AMS



Oklahoma Bark Contamination 2005-2011



Source: USDA-AMS

