



The Kerr Center

for Sustainable Agriculture

918-647-9123

Will Lathrop

Gravity Flow Water

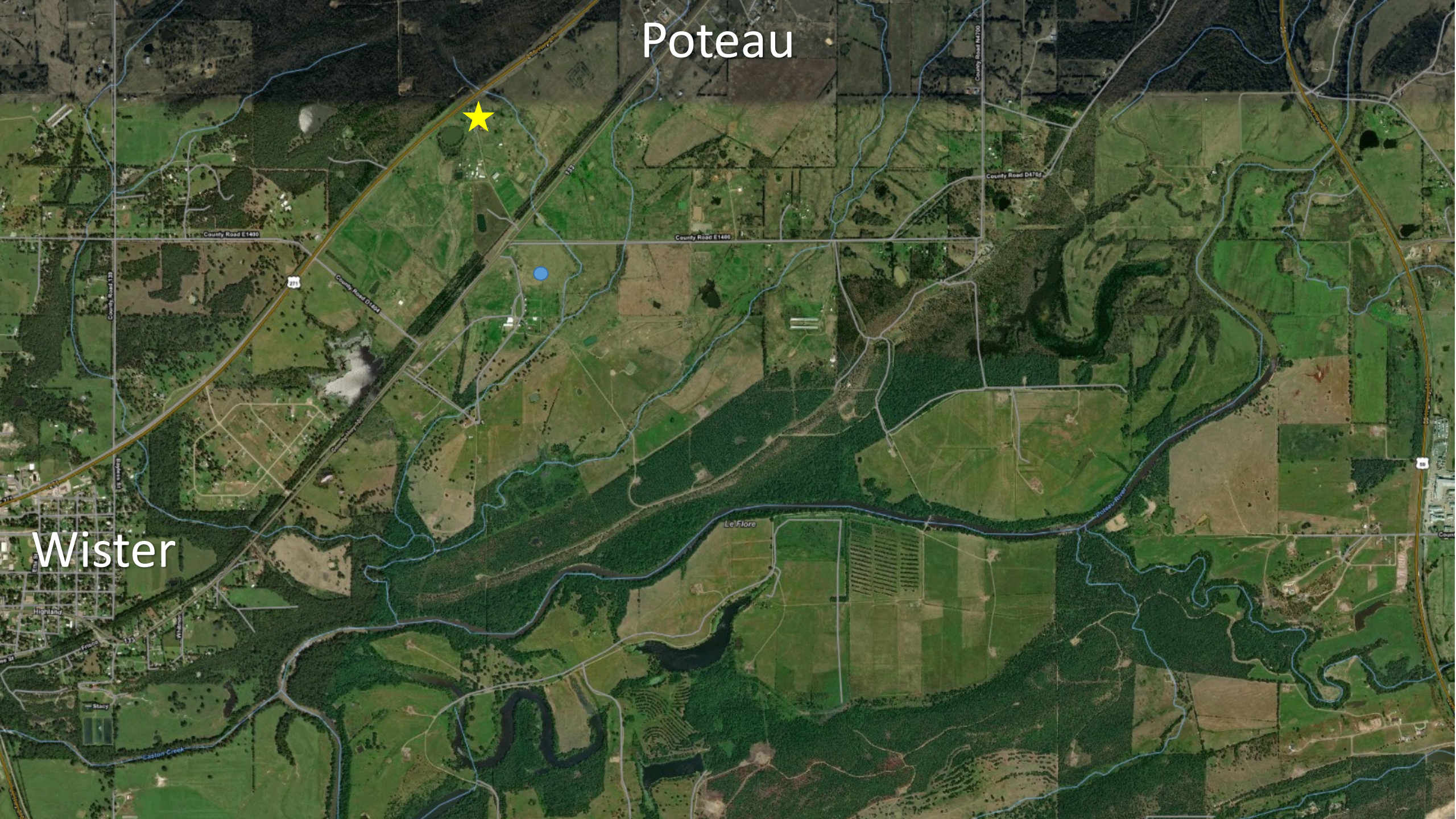


https://www2.gov.bc.ca/assets/gov/farming-natural-resources-and-industry/agriculture-and-seafood/agricultural-land-and-environment/water/livestock-watering/590304-5_understanding_gravity.pdf

Poteau



Wister





Drought- “The advice is to stock for a drought. Most people stock for a monsoon.” Dave Sparks



Grazing Workshops



Oklahoma Beginning Farmer & Rancher Program

Grazing management focuses on the relationship between herd number, area, and time.

Balanced Forage System

Oklahoma Growing Season

Warm Season: 160 days (44%)

Cool Season: 130 days (36%)

Too cold to grow: 75 days (20%)

Balance = warm + cool season forages
to cover all the growing days, and hay
or stockpiled forage to cover remaining

Adapted Breeds



Pasture Inventory by Season



Mar 1 – early June

100 days



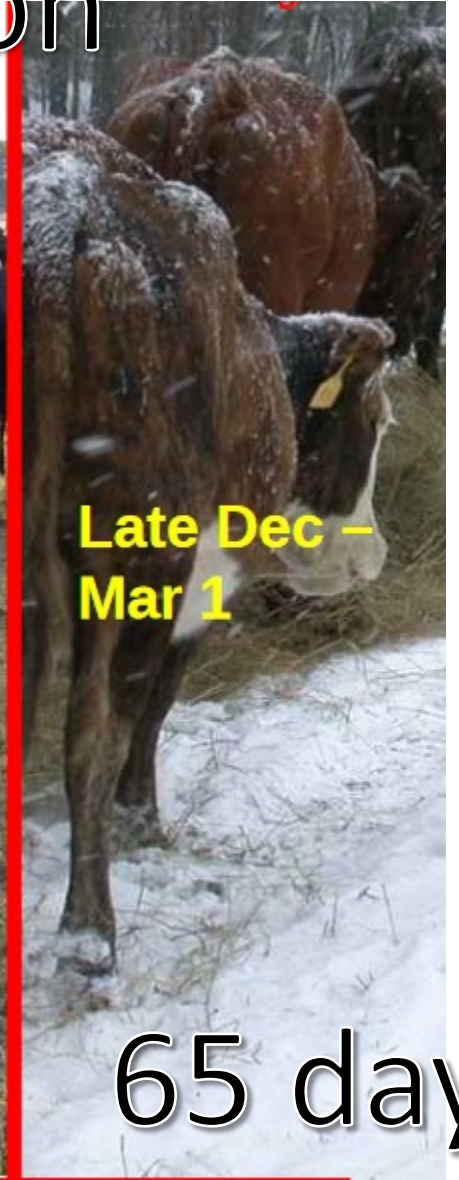
Early June – mid Sept.

100 days



Mid Sept. – late Dec.

100 days



Late Dec – Mar 1

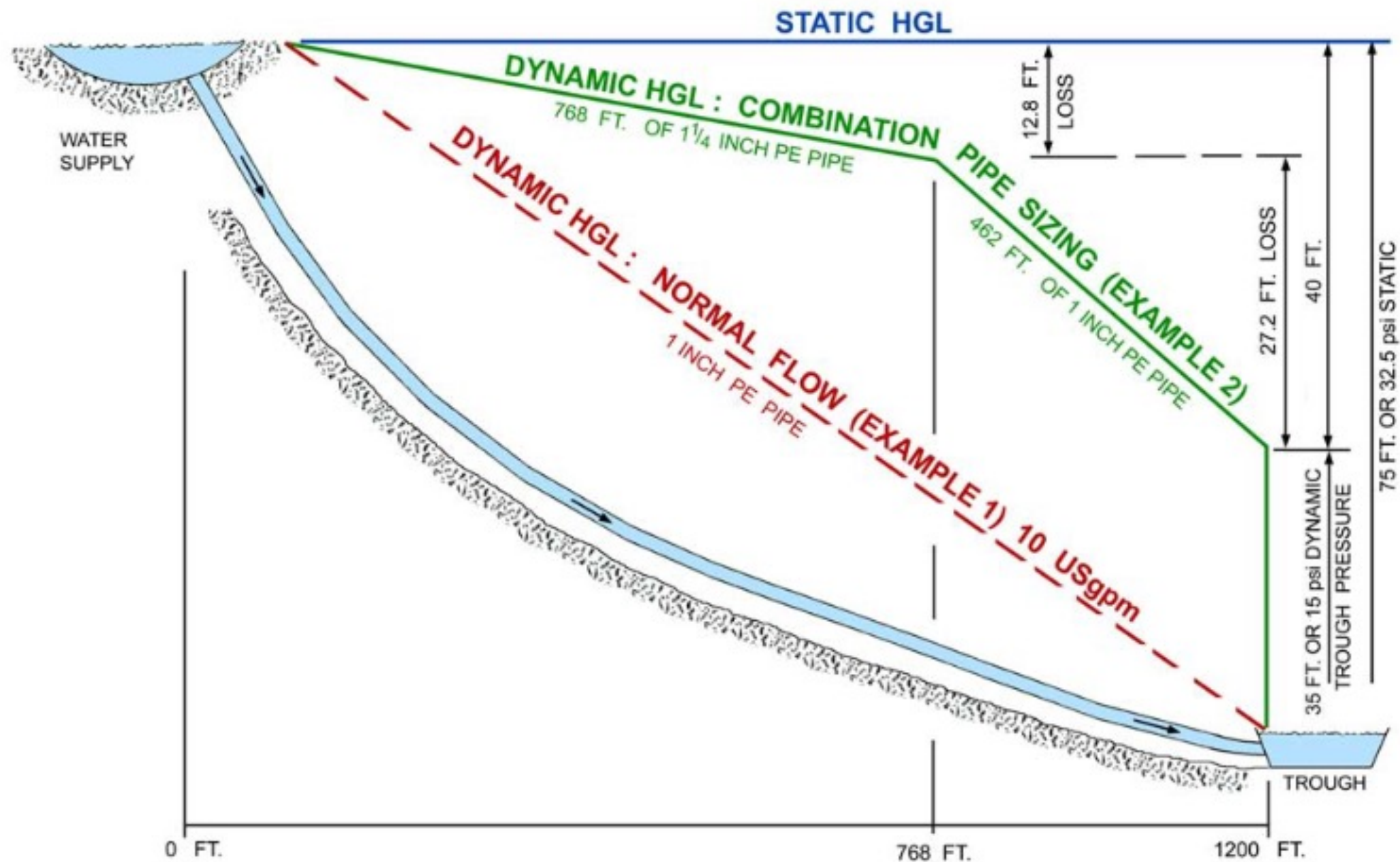
65 days

Spring

Summer

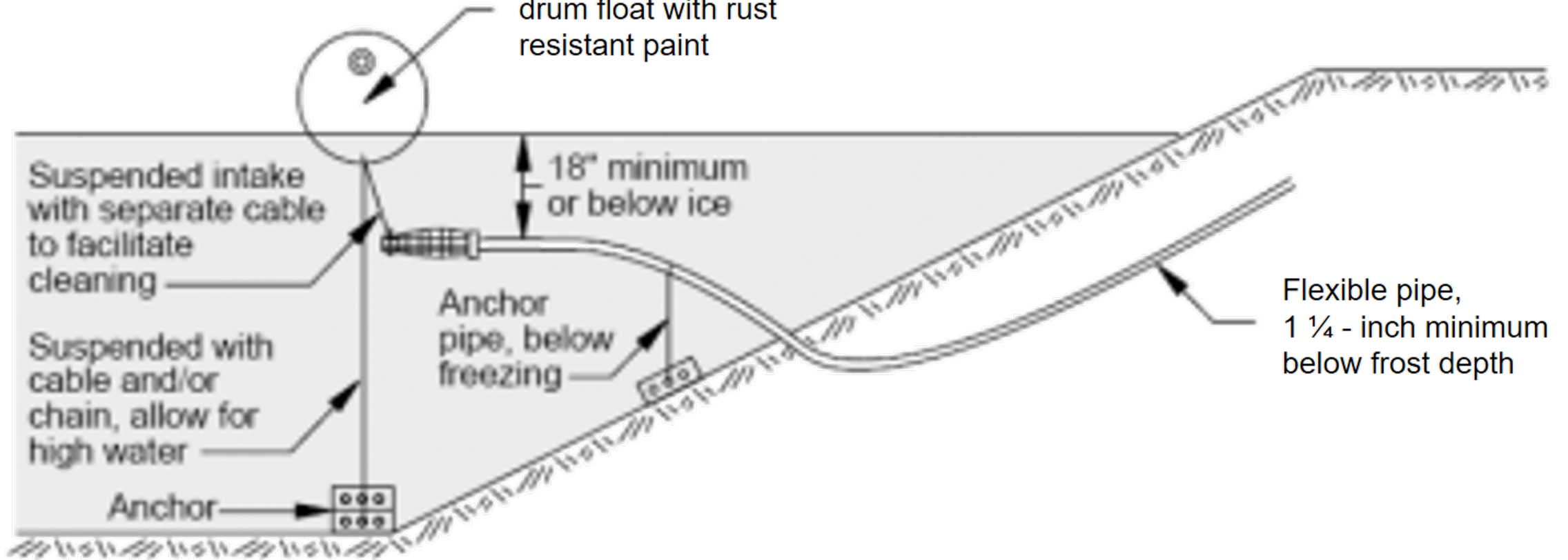
Fall

Winter

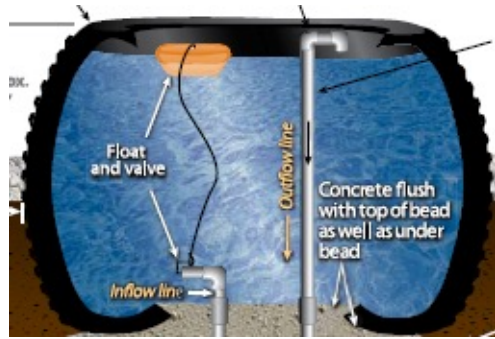




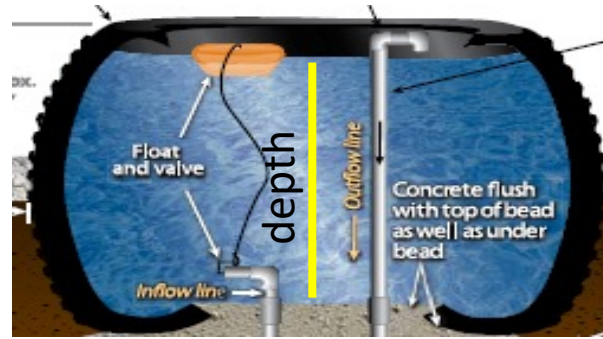
Expanded foam drum float with rust resistant paint



Volume Capacity (Approximates)



5'



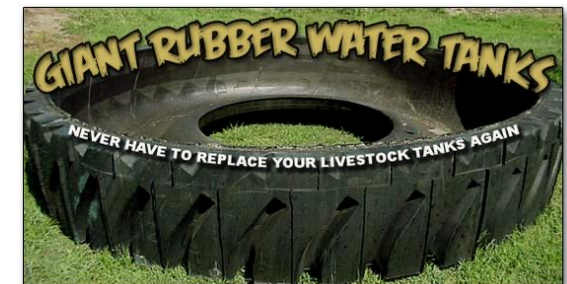
6'



10'

Gallons (Volume of Cylindrical Tank) = $\pi r^2 \times h \times 67\%$

H ₂ O Depth	5'	6'	10'
12"	393	567	1575
18"	590	850	2361
24"	787	1133	3148
30"	983	1416	3936



Recommended Supplies

1" speed bore bit
Aggressive wood bit –reciprocating saw
Geocell



<http://www.enviro-pro-us.com/geocell.php>
Physical Address: 406 S. Boulder Ave. Suite 720
Tulsa, OK 74103 PH 918-582-9400
6" x 8'X27' (2013 cost is about \$0.95 ft² or about \$205 per section.

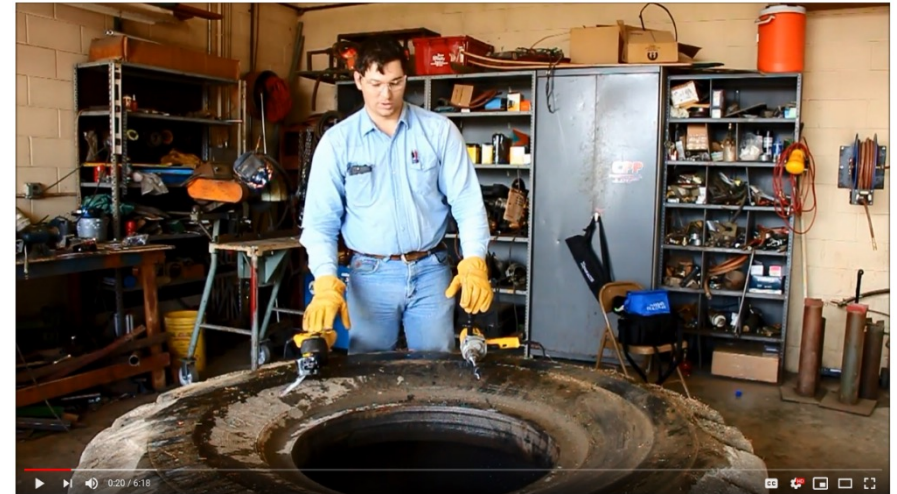
Philmac™
Quick Coupler



Jobe™ Megaflow™ Valve



Cutting



<https://www.youtube.com/watch?v=wjaA6SzZ7lo>

Remember:

➤ The positive effects of good management are magnified before and during a drought

➤ The negative effects of poor management are intensified during a drought

