



Pest e-alerts



Entomology and Plant Pathology, Oklahoma State University
127 Noble Research Center, Stillwater, OK 74078
405.744.5527

Vol. 18, No. 17

<http://entopl.okstate.edu/pddl/pddl>

5/7/19

Time to Obtain Pecan Nut Casebearer Traps

Phil Mulder, OSU Department Head & Extension Entomologist
Department of Entomology & Plant Pathology
Oklahoma State University - 127 Noble Research Center
405-744-5643

If you have not ordered your Pecan nut casebearer (PNC) pheromone traps it is time to do so. As a general rule for southern and central Oklahoma, traps should be in the orchard by the first week of May. The key to using the pheromone traps is to have the traps out early in order to detect the onset of a flight. The initial date of collection, when moths are collected will act as a benchmark for predicting egg laying (oviposition). As a general rule oviposition will start 7 – 10 days after first capture and nut entry starts 12 – 16 days after initial catch.

In 2019, we hope to resurrect online information on PNC activity and generate a PNC Risk Map. We also hope we can make it available for growers to become contributors to the national data entry. Information from other southern sites (Texas) can help Oklahoma growers anticipate the initial arrival of moths in our area and subsequent oviposition activity. In the meantime, for an individual forecast for your orchard all you need is the date of your initial catch of male moths in the traps. Remember, you must have two consecutive nights of captures to set a biofix (see table 1 below for examples).

Table 1. Examples of three orchards where traps were placed and the initial capture dates for male PNC. Note when the biofix was established for each site.

	May 14	May 15	May 16	May 17	May 18	May 19	May 20	Biofix
Orchard #1	0	0	1	2	1	5	8	May 16
Orchard #2	0	0	1	0	0	3	5	May 19
Orchard #3	0	0	3	0	1	3	0	May 18

Capturing just one or a few moths on a single, isolated night does not establish the biofix, you must capture moths on two consecutive nights to establish that time. In general, 13 days after the established biofix, 25% of the eggs of PNC will be deposited; therefore, this is the time to begin scouting. OSU Fact Sheet 7189 “Scouting for the pecan nut casebearer” provides guidelines for scouting. Every three days, growers should be scouting for PNC eggs and/or the first signs of damage, and continue that process until approximately the middle of June. Trap captures can also help indicate when PNC activity has temporarily ceased. If you find 2 infested clusters before reaching 310 clusters checked this warrants treatment.

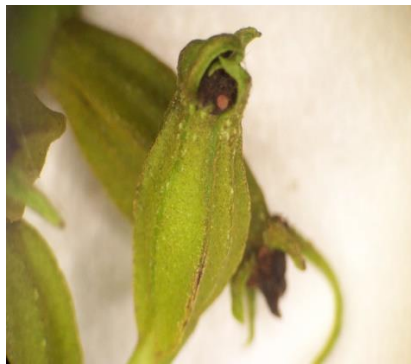
The following list provides some companies that sell PNC pheromone traps. Only 3 traps are needed for 50 acres or less and at least 5 traps for 50 or more acres, but each grower may have separate areas that need monitoring. If you order pheromone and traps from any of these sites, DO NOT leave the pheromone source out at room temperature. The small rubber septa that contains the pheromone should be placed in the FREEZER until you place traps in the orchard. When traps are deployed, simply place the rubber septa in the middle of the sticky trap bottom.



Trece, Inc. Pherocon VI trap.



Seven moths in a trap



PNC egg on stigma of nut



Close up of male moth in trap.



Damage indicated by frass near base of nut clusters

Pecan Nut Casebearer Pheromone and Traps Can be Ordered from:

Trece, Inc. P.O. Box 129 P.O. Box 129 Adair, OK 74330 Ph: 918-785-3061 Fax: 918-785-3063
Email: custserv@trece.com Order Center: 866-785-1313 <http://www.trece.com/>

Advanced Pheromone Technologies, Inc. Ph: 971-327-7129

Gempler's P.O. Box 44993 Madison, WI 53744-4993 Order by Phone: 1-800-382-8473

Great Lakes IPM Inc. 10220 Church Road Vestaburg, MI 48891-9746 Ph: 989-268-5693 or 989-268-5911 Toll Free: 1-800-235-0285 Fax: 989-268-5693 E-mail: glimp@nethawk.com
<http://www.greatlakesipm.com/>

ISCA Technologies / Moritor Technologies P.O. Box 5266 Riverside, California 92517 Tel: 951-686-5008 Fax: 815-346-1722 email: info@iscatech.com Web: www.iscatech.com

Oliver Pecan Co. Inc. 1402 W. Wallace, San Saba, TX 76877 800-657-9291 E-mail: soliver@centex.net

Pape Pecan House P.O. Box 1281 101 S. Hwy 123 Bypass Seguin, TX 78155 Ph: 830-379-7442

Southern Nut 'n Tree Equipment, Inc. and Pecan Producers, Inc. 324 SH 16 South Goldthwaite, TX 76844 1-800-527-1825 Fax: 325-938-5490 E-mail: sales@pecans.com

With PNC activity being dependent on temperature and if spring temperatures are higher than normal across the state, we can expect to see little difference in activity from south to north. So, do not wait too late to set out pheromone traps. PNC pheromone traps provide real time information on activity for individual orchards.

Products recommended for PNC control include the softer products (Intrepid, Confirm, B.t.) that are gentler on beneficial organisms and safer for the environment. Save the harsher, less discriminating products (e.g. pyrethroids, or Sevin®) for weevil season toward the end of the summer.

If you are too late for ordering PNC traps please keep an eye out for an advisory, which has nearly 15 growers/cooperators that are running traps throughout the state. I will post results of captures that these folks are obtaining once all the traps are set out. This way you can track the emergence of 1st generation PNC and have a better picture of when to scout. Based on nine traps in an orchard site in the Arbuckle Mountains, no PNC have been captured yet.

Disease and Insect Diagnostic Laboratory

The pesticide information presented in this publication was current with federal and state regulations at the time of printing. The user is responsible for determining that the intended use is consistent with the label of the product being used. Use pesticides safely. Read and follow label directions. The information given herein is for educational purposes only. Reference to commercial products or trade names is made with the understanding that no discrimination is intended and no endorsement by the Cooperative Extension Service is implied.

Oklahoma State University, in compliance with Title VI and VII of the Civil Rights Act of 1964, Executive Order 11246 as amended, and Title IX of the Education Amendments of 1972 (Higher Education Act), the Americans with Disabilities Act of 1990, and other federal and state laws and regulations, does not discriminate on the basis of race, color, national origin, genetic information, sex, age, sexual orientation, gender identity, religion, disability, or status as a veteran, in any of its policies, practices or procedures. This provision includes, but is not limited to admissions, employment, financial aid, and educational services. The Director of Equal Opportunity, 408 Whitehurst, OSU, Stillwater, OK 74078-1035; Phone 405-744-5371; email: eeo@okstate.edu has been designated to handle inquiries regarding non-discrimination policies: Director of Equal Opportunity. Any person (student, faculty, or staff) who believes that discriminatory practices have been engaged in based on gender may discuss his or her concerns and file informal or formal complaints of possible violations of Title IX with OSU's Title IX Coordinator 405-744-9154.

Issued in furtherance of Cooperative Extension work, acts of May 8 and June 30, 1914, in cooperation with the U.S. Department of Agriculture, Director of Oklahoma Cooperative Extension Service, Oklahoma State University, Stillwater, Oklahoma. This publication is issued by Oklahoma State University as authorized by the Vice President, Dean, and Director of the Division of Agricultural Sciences and Natural Resources.