

# Okfuskee County 4-H Newsletter



OSU EXTENSION  
**OKFUSKEE COUNTY  
4-H YOUTH DEVELOPMENT**

## 2021-2022 4-H ENROLLMENT

Oklahoma 4-H is dedicated to helping Oklahoma youth, families, and communities reach their full potential. By providing hands-on



programming and events in a large variety of projects, 4-H is not only helping youth learn the life skills they need to be the leaders of tomorrow, but it is also teaching its members they can lead today and can make tangible, significant changes in their clubs, their communities, their state, and their world.

Contests have started up for the 2021-2022 year all youth that would like to participate in contests at the county, district or state level must be enrolled before participating. Enrollment can be done online.

### Address:

P.O. Box 107  
1201 E. Columbia  
Okemah, OK 74859

Phone: 918-623-0641

Fax: 918-623-0103

### Email:

Amanda Sestak: [atressl@okstate.edu](mailto:atressl@okstate.edu)

### Website:

[oces.okstate.edu/Okfuskee](https://oces.okstate.edu/Okfuskee)

### Social Media:

Facebook & Instagram: Okfuskee  
County 4-H

If you know of any youth that hasn't enrolled for the new year yet, please help me by reminding them to enroll. Thank you!! **We will still take paper enrollment if needed. Forms are available at the Extension Office.**

## PRE-RECORD BOOK WORKDAYS

- November 19 after school @ Extension Office
- December 17<sup>th</sup> after school @ Extension Office

Youth will start on State Record Books for the 2021-2022 program year. During both pre workdays youth will plan out the rest of their program year to build on their project work for their books. We will also go through their books and work on formatting if needed.

Pre-Record Book Workdays are open to all youth in Okfuskee County.

Reminder State Record Books that are submitted at the county level allow youth to interview for higher up County Awards and State submissions youth will be trying for a & \$1,200 Scholarship

## 4-H POINSETTIA PLANT SALE

Okfuskee Co. 4-H is selling poinsettias again this year. Plant will cost \$12 each.

Each 4-H member that sells 10 plants will receive half pay for State 4-H Roundup and for Jr. Roundup. For families that have multiple 4-H members (not including Cloverbuds) there is a reduction of two plants for each additional member.

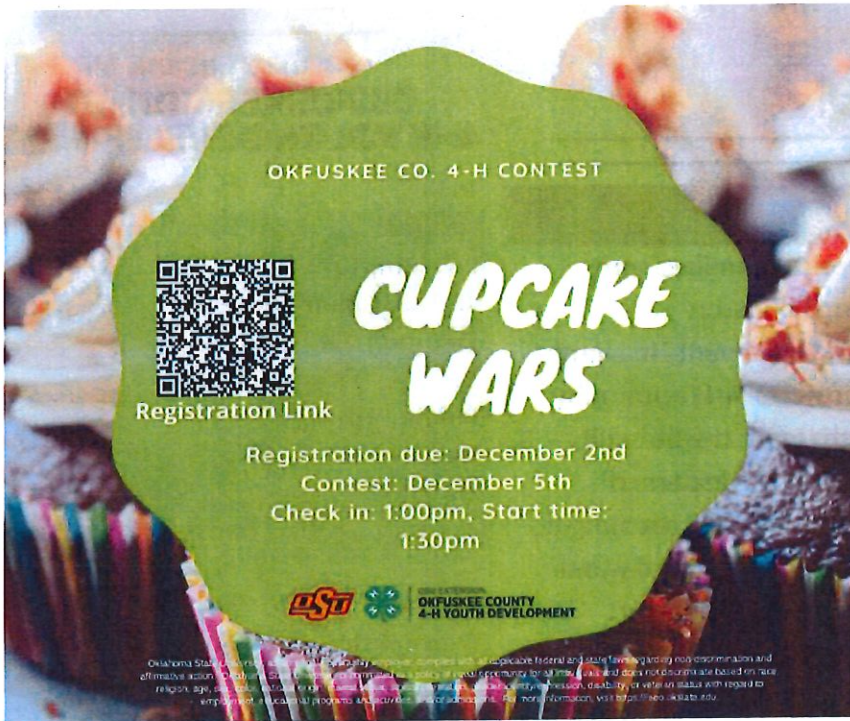
Plant order forms are due to the OSU Extension Center on

**November 8<sup>th</sup> by 4:00pm.**

Plants will be available for pick up the first week in December, unless changed.







We must have a minimum of 5 teams entered to hold the contest.

**RULES OF PLAY**

Teams will consist of 2-3 team members.

Each team will display three cupcakes.

Each team will bring “naked” cupcakes. The cupcakes should have no frosting and be in the paper wrappers only.

Each team will bring the frosting mixed in bowls. The frosting should not be tinted prior to contest.

Teams will tint and place in frosting bags, if needed at the contest. Frosting can be either store bought or homemade. If store bought, can be either white or chocolate frosting.

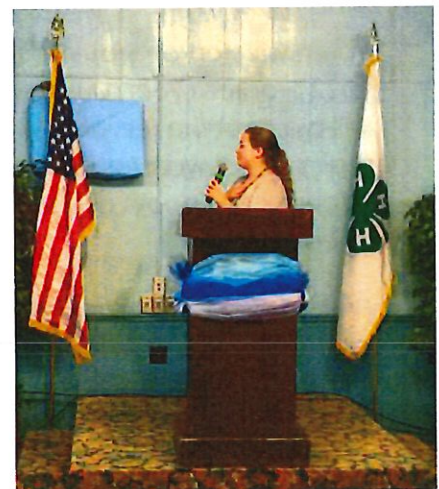
If teams are using fondant, they can use either homemade or purchased fondant. Teams are allowed to purchase tinted (colored) fondant to use or may tint fondant off site.

Teams are allowed to use purchased edible decorating items. Only edible items can be used on the cupcakes.

**YOUTH IN ACTION LEADERSHIP CONFERNECE**

Youth in Action Conference is for 4-H youth in grades 7<sup>th</sup>-12<sup>th</sup> in the Northeast District to attend. Youth in Action is held at Fin N Feather Resort in Gore Oklahoma. During YIA youth participate in several activists such as, workshops, tournaments, leadership opportunities, and help with a service-learning project. This years' service-learning project was stamp out starvation. Youth helped pack meals for over 44,000 families in Haiti and we raised over 1,000 dollars for the OU Children's Hospital, and packed boxes full of school supplies, canned food items and blankets for families and students effected with the floods in Weber Falls. We also had a motivational speaker; entertainment; dance; made new friends; and had tons of Fun!! Okfuskee County took 12 delegates to YIA this year.

This year at YIA Clarissa Smith a member for Mason 4-H was elected to the Northeast District Officer Team and will be representing Okfuskee County as the NED Song/Recreation Leader. Congratulations Clarissa!!!





## Food and Farm Festival Photo Entries Due Nov. 18<sup>th</sup>

The 2021 Okfuskee County Food and Farm Festival will be held virtually. A special commemorative gift will be presented to participating exhibitors. To participate, first take a photo of your item. Then email the photo— along with your name, contact number, and a description of your exhibit— to Jan Maples (janelle.maples@okstate.edu) or Amanda Sestak (atressl@okstate.edu). Exhibit photos must be submitted to the Extension Office staff no later than 4:30 p.m. Thursday, November 18th.

\*\*Please note a slide show featuring each exhibit photo, exhibitor name & related information will be posted to Facebook for viewing.

Exhibit photos must be submitted to the Extension Office staff no later than 4:30 p.m. Thursday, November 18th.

The 2021 Okfuskee County Food and Farm Festival is open to residents of Okfuskee County, OHCE members, or students in any Okfuskee County school.

Categories available in the Food and Farm Festival include the following.

\***Pecans in the shell** (Native Large Group Class; Native Small Group Class; and Pecan Improved Varieties)

### \*Food Exhibits

(**Pecan** Food Classes include pies; brownies; cookies; cakes; quick breads; pecan brittle; candy; fudge; yeast breads; muffins; miscellaneous)

(**Peanut** Food Classes include: brownies; cookies; cakes; quick breads; peanut brittle; candy; fudge; muffins; miscellaneous)

(**Honey** Food Classes include: pies; cookies; cakes; muffins; candy; miscellaneous)

----- Food items must contain at least ½ cup nuts or nut butter, or ¼ cup honey, as applicable, and must be accompanied by a recipe. The nuts, nut butter, or honey must be in the batter or candy, not just sprinkled/drizzled on top of the finished product.-----

\***Honey Exhibits** (bulk white comb honey class; white extracted honey class; amber bulk comb honey class; and amber extracted honey class)

\***Pumpkin Exhibits** (field type class; jack-o-lantern class; and giant class)

There is a coloring sheet category for children 3 years old to 2<sup>nd</sup> graders. Stop by or call the Extension Office for a coloring sheet.

For older children and youth there is a poster category for youth in the 3<sup>rd</sup> – 12<sup>th</sup> grade. Posters should promote the Food and Farm Festival. Contact the Extension Office for more information.



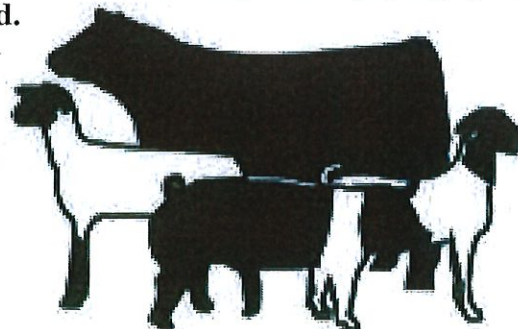
## SPRING LIVESTOCK SHOW 2021

Forms and tags can be picked up from the OSU Extension Office. Animals must be tagged at the time of entry. Extension Educators, FFA advisors, or animal owners can apply the tags and complete the forms. Bred and Owned animals will be verified by registration papers or completion of the Bred and Owned form, signed by exhibitor, parent, and Extension Educator or FFA Advisor.

Entry Fee is **\$5.00 per animal**. Late entries will be accepted until February 1, 2021, if accompanied by an additional \$100.00 late fee per animal; contact the Fair Board for a late entry.

**Tags and entry forms can be picked up starting December 1<sup>st</sup>. Completed nomination forms, bred and owned certification, lamb lead, and payments are due on Friday January 14<sup>th</sup>. If you are paying by check please make checks payable to the Okfuskee County Fair Board.**

**\*\* All 4-H youth must be enrolled and in Zsuties system by January 1<sup>st</sup> or they will not be eligible to show at the spring show.**





## PARENT VOLUNTEER MEETING

Attention parents and volunteers the PVO meeting has changed dates. The parent volunteer meeting has been moved to every 2<sup>nd</sup> Monday of each month at 5:15pm at the OSU Extension Office. This meeting is open to all 4-H volunteers and 4-H parents to attend.

**Next Meeting:**

**When: November 8<sup>th</sup>**

**Time: 5:15pm**

**Where: OSU Extension Office and via Zoom**

## OKLAHOMA YOUTH EXPO

### 2022 OYE Nominations Kits...

- ◆ **Completed Goats, Sheep, and Steers kits are due back to the Extension Office by November 8th**

If you are planning on showing hogs at OYE this year please have your nomination kit order and fee to the OSU extension office by November 8th in order for Amanda to pick up tags on November 12th.

- ◆ **Swine Kits are due back to the Extension Office by November 29th**

- ◆ **Kits are \$20.00 each**



## 4-H YARD SIGNS

Yard Signs are in and ready for pick up!!!

4-H is selling yard signs to promote the Okfuskee County 4-H Program and as a fundraiser. To help raise money for the 2021-2022 Program year.

**Signs are \$10.00 each**





# Baskets for the Better

Okfuskee County 4-H Teen Leaders are starting a Community Service project gathering items for foster parents. If you would like to help here are a few items, we would need donated:

- Baby wipes
- Diapers newborn to size 2
- Bibs
- Baby socks
- Baby shampoos
- Thermometers
- Wash cloths
- For the older kids
- Socks
- Underwear
- Toiletry items
- Toothbrushes and toothpaste
- Combs/hairbrush's
- Ponytail holders/scrunches
- Plastic baskets

Please keep in mind that these items do have to be new unused items.

You can drop off items at the Okfuskee County Extension Office





## "Flowers for our Fallen Heroes" 4-H Service Project 2021-2022

Okfuskee County 4-H is needing help collecting flowers for our fallen troops, firefighters, police officers, EMS and any other first responders and veterans.

We are collecting live flowers, artificial flower and/or donations to purchase flowers.

We are wanting to make small flower arrangements for our veterans and first responders that have passed. We will be placing them at the service members' grave sites.

Oklahoma State University, as an equal opportunity employer, complies with all applicable federal and state laws regarding non-discrimination and affirmative action. Oklahoma State University is committed to a policy of equal opportunity for all individuals and does not discriminate based on race, religion, age, sex, color, national origin, marital status, sexual orientation, gender identity/expression, disability, or veteran status with regard to employment, educational programs and activities, and/or admissions. For more information, visit <https://eeo.okstate.edu>.



# 4-H TUESDAY TOOL TIME



Tuesday Tool Time 6:30 – 7:15 pm.

This continuing education opportunity is brought

to you by the [State 4-H Volunteer Board](#). By attending Tuesday Tool Time these trainings will count toward Volunteer continuing education trainings for Volunteer Certification.

For Volunteers, Parents and Extension Professionals

## 2021 Schedule

December 7 – Appreciation and the 4-H Experience

## 2022 Schedule – Topics to be Determined

February 8

April 5

August 9

November 8



4-H volunteers are vital to a successful 4-H program. Volunteers wear lots of different hats and provide their time, talents and resources at the club and county level. Leadership will include planning, developing, implementing activities, being a positive role model and working cooperatively with 4-H families, 4-H volunteers, and Extension Educators.

**2021-2022 Enrollment: 4-H Volunteers please submit your enrollment TODAY! Trainings must be completed before or by December 1<sup>st</sup>. All volunteers must have their enrollment and trainings completed. Trainings can be completed on online or in person.**

## TEEN LEADER AND PVO MEETINGS

OKFUSKEE COUNTY 4-H

### Be a Teen Leader

Join the Teen Leadership Team

Teen Leader Meetings for 2021-2022

Start Time: 5:15pm @ Okfuskee County Extension Office

September 13,2021  
October 11,2021  
November 8,2021  
December No Meeting  
January 10,2022  
February 14,2022  
March 7,2022  
April 11,2022  
May 9,2022  
August 8,2022



We invite you to come and be apart of the  
Leadership Team

OKFUSKEE COUNTY 4-H

### Parent Volunteer

### Organization

PVO Meetings for 2021-2022

Start Time: 5:15pm @ Okfuskee County Extension Office

• September 20,2021  
• October 18,2021  
• November 15,2021  
• December No MTG.  
• January 11,2022  
• February 21,2022  
• March 21,2022  
• April 18,2022  
• May 16,2022  
• August 15,2022





Oklfuskee County Cooperative Extension Service  
P.O. Box 107  
Okemah, OK 74859

\*\*\*I'd love to hear from you all and your clubs on what you have been up to throughout the 4-H year. In each newsletter I will post an article about an event or program your club is doing. Help me out by sending in a small article and some pictures and it will go in the newsletter.

\*\*\*All entries and guidelines can be found on the county website along with copies of all the newsletters. Or you can contact Amanda Sestak 4-H Educator for more information. Another good resource to stay up to date with all that we have going on is by following us on Facebook and Instagram

Sincerely, *Amanda Sestak*

Amanda Sestak

Ext. Educator, 4-H/Youth  
Development/CED