

# Groundcovers for Garfield County

Rick Nelson, Garfield County Extension Educator —Ph: 580-237-1228



**Ajuga** Herbaceous, evergreen, part sun to shade, height—4", plant 12" apart.

**Aaronsbeard St. Johnswort** Deciduous, sun to part sun, height—18", plant 24" apart.

**Dwarf Bamboo** Herbaceous, sun, part sun to shade, height 12", plant 12" apart.

**Bishops Weed** Herbaceous, part sun to shade, height 10", plant 12" apart.

**Blue Fescue** Evergreen, Sun to part shade, height 8" plant 8" apart.

**Candytuft** Evergreen, sun, part sun to shade, height 6-12", plant 12"-18" apart.

**Creeping jenny or moneywort** Evergreen, herbaceous, part sun to shade, height 2-4", plant 12" apart.

**English Ivy** Evergreen, part sun to shade, height 8", plant 12" apart.

**Euonymus Coloratus** Evergreen, sun, part sun to shade, height 18", plant 18" apart.

**Fleece flower, dwarf** Herbaceous, sun to part sun, height 4-6", plant 18" apart.

**Honeysuckle** Evergreen, sun, part sun to shade, height 2-3", plant 4-5" apart.

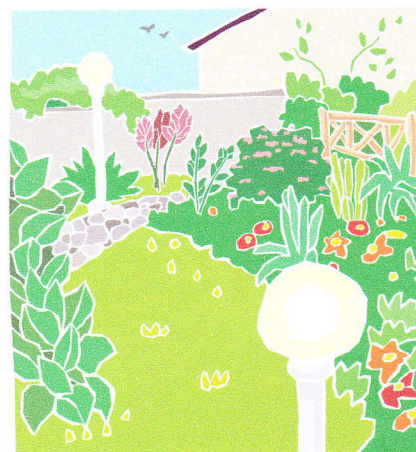
**Junipers** Evergreen, sun to part sun, height 12-24", plant 3-4' apart.

**Junipers, creeping** Evergreen, sun to part shade, height 6-24", plant 3-4' apart.

**Liriope or monkey grass** Evergreen, part sun to shade, height 12", plant 8-12" apart.

**Mahonia, creeping** Evergreen, sun, part sun to shade, height 12", plant 18" apart.

**Mondo grass** Evergreen, part sun to shade, height 6", plant 6" apart.





**Pachysandra** Evergreen, shade, height 6-8", plant 6" apart.

**Periwinkle, big leaf** Evergreen, herbaceous, part sun to shade, height 12-18", plant 12" apart.

**Periwinkle, common** Evergreen, shade, height 6", plant 12" apart.

**Rose, memorial** Deciduous, evergreen, sun to part shade, height 6-12", plant 4" apart.

**Santolina** Evergreen, sun, height 12-18", plant 12-18" apart.

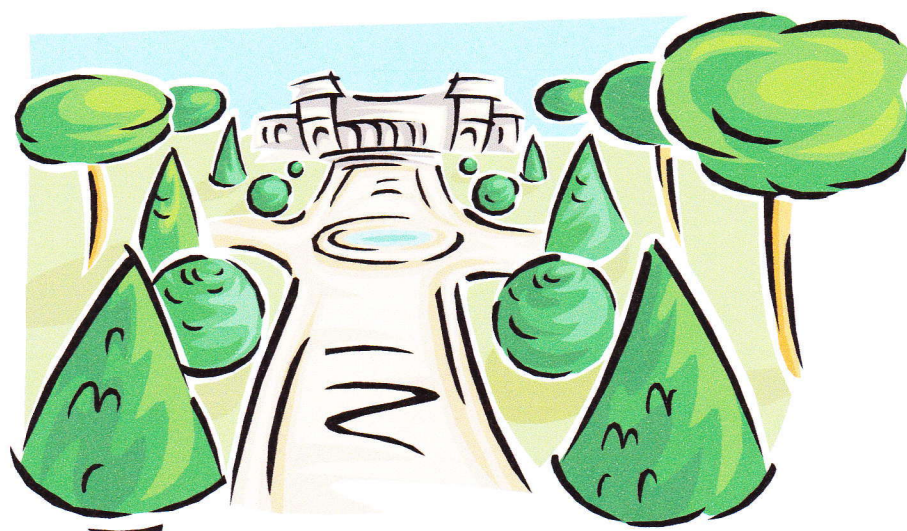
**Sedum** Evergreen, sun, height 4-6", plant 6-18" apart

**Silkvine** Deciduous, sun, height 12-18", plant 2-3' apart.

**Tufted hair grass** Herbaceous, sun to part shade, height 1-3', plant 3-4' apart.

For more information contact

Garfield County OSU Extension Center  
316 E. Oxford  
Enid OK 73701  
580-237-1228



Oklahoma State University, U.S. Department of Agriculture, State and local governments cooperating. Oklahoma Cooperative Extension Services offers its programs to all eligible persons regardless of race, color, national origin, gender, age, religion, disability, or status as a veteran and is an equal opportunity employer.

—Bringing the University to You—