



April 2024

# Carter County Ag Advisory

**CARTER COUNTY  
EXTENSION**

*OSU is an Affirmative Action, Equal Employment Opportunity, E-Verify Employer.*

## Upcoming Events

### April 4th:

OSU Beef Extension is hosting the **Rancher's Thursday Lunchtime Series** via zoom this April to discuss the latest research and information on beef x dairy crossbreeding systems. Webinars are free and start at noon every Thursday.



Contact David Lalman to register:

(405-744-6060 or David.lalman@okstate.edu)

### April 9th:

OSU Beef Extension is hosting the Rancher's Thursday Lunchtime Series via zoom this April to discuss the latest research and information on beef x dairy crossbreeding systems. Webinars are free and start at noon every Thursday. Master Gardeners Meeting from 6-8pm, location TBD. Contact the office if you are interested in attending!

### April 11th:

OSU Beef Cattle Summit will take place at the McClain Co Expo Center in Purcell, OK from 8am-3pm.

### April 13th:

Join your Carter County Extension office for the State of Orange to make flower arrangements with the lovely residents at Canoe Brook of Ardmore. Contact the office for more information about getting involved with this volunteer event.

### April 20th:

27th Annual Earth First Expo presented by the Ardmore The Beautification Council will be held from 10am-2pm at Thompson Square in Ardmore. Join us for Earth Day activities, vendor booths, and recycling opportunities!

### April 22nd & 24th:

ODAFF will be collecting unwanted pesticides and safely disposing of them free of charge. Bring your old, unusable, and unwanted pesticides to the Jackson Co Expo Center in Altus on April 22nd or the Heart of OK Expo Center in Shawnee on the 24th between 8am—1pm.

## Your Local Office

### **Address:**

25 A ST. NW Suite 200  
Ardmore, OK 73401

### **Phone:**

580-223-6570

### **Website:**

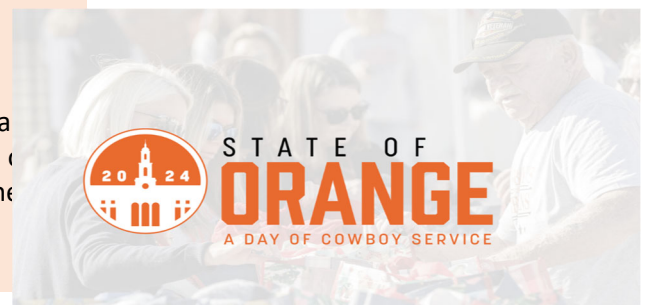
<http://extension.okstate.edu/county/carter/>

### **Follow Us On Facebook:**

Facebook.com/  
CarterCountyOsuExtension/

## In This Issue:

- Upcoming Events
- Ag News
- Hort Notes
- Featured Article





April 2024

# Carter County Ag Advisory

CARTER COUNTY  
EXTENSION

*OSU is an Affirmative Action, Equal Employment Opportunity, E-Verify Employer.*

## Ag News

### Update on Soil Sampling Handling Guidelines

Soil samples should not be brought to the office in a sealed container, as that allows the soil microbes to rapidly break down organic matter. This leads to higher levels of NO<sub>3</sub> in the tests than would actually be found in the field itself.

To increase the accuracy of your soil tests, bring samples in UNSEALED containers, such as paper bags, small buckets, or unsealed plastic baggies.

Now is a great time to get your **soil tested**.

Be prepared for spring fertilization with results from a soil test and personalized recommendations— all you have to do is bring a sample down to the extension office!

See this fact sheet on proper soil sampling methods:

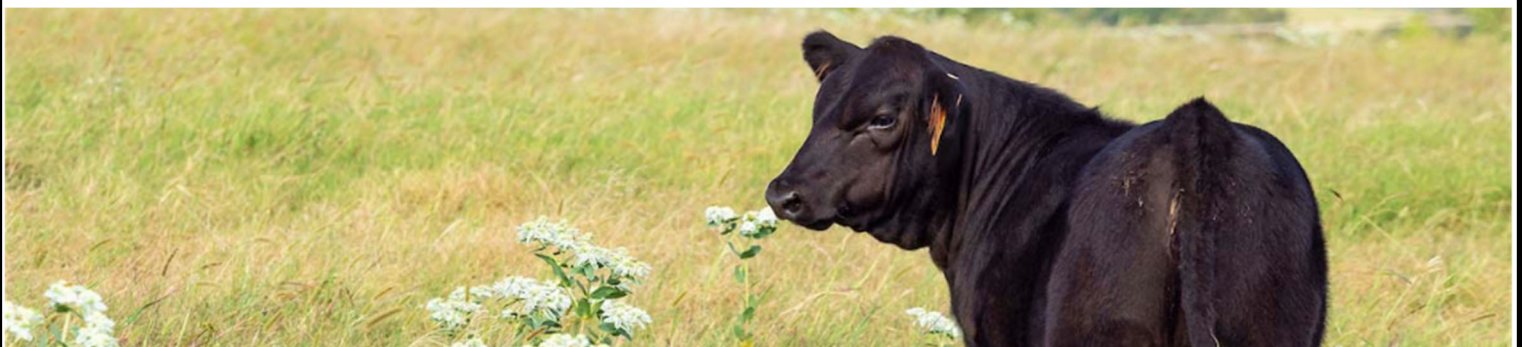
<https://extension.okstate.edu/fact-sheets/how-to-get-a-good-soil-sample.html>

**We also test water and forages!**



### General Beef Cattle Management Tips for April:

- ⇒ Vaccinate bulls for anaplasmosis, if not previously done this year, and continue other control measures for the herd.
- ⇒ Plan fly and tick control program. Check spraying equipment, dust bags, and oilers, and purchase needed chemicals or tags for fly and tick control.
- ⇒ For establishing new stands of lovegrass, seed in April and May. Spray or burn weeds in Bermuda and native grass pastures in late April or May.
- ⇒ Use prescribed fire to eradicate cedars and improve forage quality.
- ⇒ As temperature increases, remove cattle from endophyte infected fescue pasture; usually by early May. For fescue or other cool season forages, manage pastures to keep forage from maturing and incorporate legumes to aid in preventing fescue summer slump.





April 2024

# Carter County Ag Advisory

**CARTER COUNTY  
EXTENSION**

*OSU is an Affirmative Action, Equal Employment Opportunity, E-Verify Employer.*

## Hort Notes

### Carter County 4-H Garden Project

Carter County 4-H will be transforming this area in front of the Commissioners' office building on Broadway in Ardmore into a beautiful garden this spring! We would greatly appreciate seed or plant donations to help the 4-H program get started. This area stays quite shady most of the day, so we are looking for shade-loving plants and flowers. Stay tuned for updates and "after" photos!



### 27th Annual Earth 1st Expo, April 20th

Join the Ardmore Beautification Council for the Earth 1st Expo this year at Thompson Square in Ardmore from 10am-2pm. This event includes recycling opportunities, vendor booths, and hands-on activities. Carter County 4-H will be selling vegetable seedlings that they planted in March as a project fundraiser.

### Do You Need Pesticide CEU Credits?

Join us for a pesticide conference on April 25th, 2024 at the Agri-Plex in Ada, OK. Contact the office for more information.

Be on the lookout for another pesticide CEU conference to be held in Carter County this spring!

### Tips from the Master Gardeners

*Adapted from Pat Nesbitt's article*

- ⇒ The ideal time to prune deciduous trees and shrubs is now!
- ⇒ Pruning just before new growth starts is the safest time for the plants

⇒ Wait until after, these plants bloom to prune them:

- forsythia, redbud, rhododendron, viburnum, hydrangeas

⇒ Remove dead, diseased, damaged, or "dinky" wood first when pruning

⇒ Do not top or hat rack trees! This makes trees weak, unsightly, have slow decline, and eventually leads to the tree's death





April 2024

# Carter County Ag Advisory

OSU is an Affirmative Action, Equal Employment Opportunity, E-Verify Employer.

**CARTER COUNTY  
EXTENSION**

## Featured Article

### **Borer Basics– Protecting Your Fruit Trees**

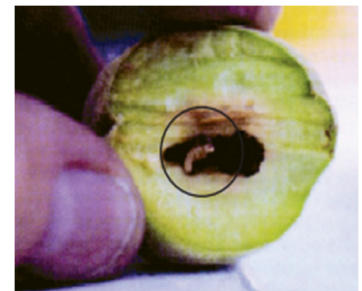
*Stephanie Smith, Ag/4-H Educator*

First, what is a borer? “Borer” is a common name for the larval stage of beetles that tunnel into stems, trunks, and branches of woody plants. Generally they resemble a whitish-yellow colored grub. There are many types of beetles and borers that negatively affect fruit trees in Oklahoma. Fruits such as peaches, plums, pears, cherries, pecans, and apples are all susceptible to borers.

Stressed and weakened trees are most at risk of borer infestation. Drought stress is a major issue in southern Oklahoma. Properly caring for fruit trees is paramount in regards to controlling these pests. The images to the right demonstrate borer damage including sticky orange sap, mangled bark/limb tissue, bruised/ruined fruit, and pencil-sized holes. Infestations will not self-correct, and left untreated, will result in dead trees. If caught early enough, vigorous trees can recover.

Reduce the extent of infestation by optimizing trees’ growing conditions: provide adequate water, fertilizer, sunlight, and protection. Protection may involve white-washing trunks with latex paint, wrapping trunks, pruning dead branches, trapping & removing adult beetles before they lay eggs, or applying dormant oils or chemical insecticides.

Since different types of fruit trees are affected by different borers, its best to consult fact sheets and extension professionals for the most accurate chemicals to use as well as their application rates and the best timing to apply.



#### **For more detailed information, see these OSU Fact Sheets:**

- EPP-7306, Ornamental & Lawn Pest Control
- EPP-7315, Shade Tree Borers
- EPP-7319, Home Tree Fruit Production & Pest Management
- EPP-7078, Biology & Control of the Plum Curculio in Fruit Trees

© Robin Rosetta, Oregon State University